

INDEX OF MULTIPLE DEPRIVATION 2004

Background

Indices of Multiple Deprivation are based on the idea that there are distinct domains of deprivation (income, health, living environment, etc), which can be recognised and measured separately. These are experienced by individuals living in an area. People may be counted in one or more of these domains, depending on the number of types of deprivation they experience. The numbers of people in an area suffering each type of disadvantage are then subjected to various statistical transformations and weighted to give an overall area level summary of the domains of deprivation.

The Index of Multiple Deprivation 2004 was commissioned by the Office of the Deputy Prime Minister (ODPM) and produced by the Social Disadvantage Research Centre at Oxford University.

Geographical Areas for the release of IMD 2004 - Super Output Areas

The Index of Multiple Deprivation 2004 (IMD 2004) give measures of deprivation for every lower level Super Output Area and local authority area in England. There are 32,482 Lower Level Super Output Areas (SOA1) in England including 116 in Herefordshire. The article elsewhere in this report entitled "New Output Geographies" describes the construction and use of super output areas.

Domains of Deprivation

The IMD 2004 combines a number of indicators across 7 domains into a single deprivation score and rank for each area. The 7 domains are: Income, Employment, Health deprivation and disability, Education, skills and training deprivation, Barriers to Housing and Services, Living Environment deprivation and Crime.

There are also six summary measures for County Councils and Unitary Authorities (including Herefordshire). In addition, an Income Deprivation Affecting Children Index and an Income Deprivation Affecting Older People Index have been produced.

Indicators

The 37 indicators incorporated in the index are listed in Table 1. They were chosen using 6 main criteria:

- A direct measure of the form of deprivation
- Measuring major features of deprivation (not conditions just experienced by a few)
- Up to date
- Capable of being updated on a regular basis
- Statistically robust
- Available for the whole of England at a small area level in a consistent form.

Table 1 – Domains and Indicators of Deprivation

Domain		Summary of Indicators
Income		<ul style="list-style-type: none"> • Adults and children in households dependent on Income Support (2001). • Adults and children in households dependent on Income Based Job Seekers Allowance (2001). • Adults and children in households receiving Working Families Tax Credit whose equivalised income (excluding housing benefits) is below 60% of median before housing costs (2001) • Adults and children in households receiving Disabled Person's Tax Credit whose equivalised income (excluding housing benefits) is below 60% of median before housing costs (2001) • National Asylum Support Service supported asylum seekers in England in receipt of subsistence only and accommodation support (2002).
Employment		<ul style="list-style-type: none"> • Unemployment claimant count of women aged 18-59 and men aged 18-64 averaged over four quarters (2001). • Incapacity Benefit claimants – women aged 18-59 and men aged 18-64 (2001) • Severe Disablement Allowance – women aged 18-59 and men aged 18-64 (2001). • New Deal participants aged 18-24 not in the claimant count (2001) • New Deal participants aged 25+ not in the claimant count (2001) • Participants in the New Deal for Lone Parents aged 18 and over (2001)
Health Deprivation & Disability		<ul style="list-style-type: none"> • Years of Potential Life Lost (1997 – 2001). • Comparative Illness and Disability Ratio (2001). • Measures of emergency admissions to hospital (1999 – 2002) • Adults under 60 suffering from mood or anxiety disorders (1997 – 2002)
Education, Skills & Training	Children and Young People	<ul style="list-style-type: none"> • Average points score of children at Key Stage 2 (2002) • Average points score of children at Key Stage 3 (2002) • Average points score of children at Key Stage 4 (2002) • Proportion of young people not staying on in school or school level education above age 16 (2001) • Proportion of under 21s not entering Higher Education (1999-2002) • Secondary school absence rate (2001 – 2002)
	Skills	<ul style="list-style-type: none"> • Proportions of working aged adults (aged 25 – 54) with no or low qualifications (2001)

Barriers to Housing and Services	Wider Barriers	<ul style="list-style-type: none"> Household overcrowding (2001). Homeless households (2002) Difficulty of access to owner-occupation (2002)
	Geographic Barriers	<ul style="list-style-type: none"> Road distance to GP premises (2003) Road distance to a supermarket or convenience store (2002) Road distance to a primary school (2001 – 2002) Road distance to a Post Office (2003)
Crime		<ul style="list-style-type: none"> Burglary (April 2002 – March 2003) Theft (April 2002 – 2003) Criminal Damage (April 2002 – March 2003) Violence (April 2002 – March 2003)
Living Environment	Indoors	<ul style="list-style-type: none"> Social and private housing in poor condition (2001) Houses without central heating (2001)
	Outdoors	<ul style="list-style-type: none"> Air quality (2001) Road Traffic Accidents involving injury to pedestrians and cyclists (2000 – 2002)

Source: ODPM, 2004

The Income Deprivation affecting Children Index and the Income Deprivation affecting Older People Index are based on the appropriate age related indicators from those within the Income domain.

Weighting the Indicators

Different methods for combining the indicators are used in different domains. Some of these methods are rather complex.

The domains are given weights in the calculation of the overall index, appropriate to their importance. The weights are shown in Table 2.

Table 2: Domain Weights for the Index of Multiple Deprivation 2004

Domain of Deprivation	Domain Weight
Income deprivation	22.5%
Employment deprivation	22.5%
Health deprivation and disability	13.5%
Education, skills and training deprivation	13.5%
Barriers to Housing and Services	9.3%
Crime	9.3%
Living Environment	9.3%

Domain “Scores”

The scores on the individual domains generally mean nothing once the measures are subjected to various complex statistical techniques designed to ensure that there is no “cancelling out” or implicit double weighting or too much weight put on an indicator which has values over a greater range than some other indicator. The exceptions to this are:

- The income domain where the score is the proportion of the area’s population who experience income deprivation,
- The employment domain where the score is the proportion of the area’s population experience employment deprivation,
- The Income Deprivation Affecting Children Index. This is the proportion of an area’s under 16 population who live in Income deprived households.
- The Income Deprivation Affecting Older People Index. This is the proportion of an area’s population of retirement age who live in Income deprived households.

Results for Herefordshire

(Reworked after ODPM released revisions on 18th June 2004 as errors were discovered in the data released, by them in May)

Each Super Output Area (SOA) is given a rank within each of the 7 domains, as well as on the overall summary Index, showing how deprived it is relative to all others in England. Low ranks denote greater deprivation. *Out of 354 districts / unitary authorities in England Herefordshire ranks between 192 – 209 depending on whether ranking is done by looking at average domain score, average domain rank, local concentration or extent of deprivation.* When Income Deprivation is considered, Herefordshire is the 114th most deprived local authority out of the 354. On the Employment Domain, the County ranks 120th.

Deprivation “hot spots” exist in the two major urban centres within the County, as shown in Figure 1. *The SOA, named by the Research Team as Golden Post –Newton Farm in the South Wye area is in the most deprived 20% in England as is the Leominster - Ridgemoor SOA. There are a further 5 SOA’s in the 25% most deprived in England: Hunderton-Bishop’s Meadow, Redhill-Belmont Rd, Hereford City Centre, Hunderton, Newton Farm-Brampton Road.*

Each SOA is also given a separate rank on the Income Deprivation Affecting Children Index and the Income Deprivation Affecting Older People Index. In general SOAs in Herefordshire rank about 2,000 higher on Older People Index than they do on the Children Index. This suggests that, *relative to other parts of England*, Herefordshire’s families are more likely to be income deprived than older people. This is not to say that families within the County are worse off than pensioners; the IMD 2004 is not constructed in a way to enable that comparison.

It is interesting to consider the Barriers to Housing and Services Domain which is based on indicators in two sub-domains relating to (1) geographical distance from basic services, and (2) housing issues of overcrowding, homelessness and “affordability”. Unfortunately, it is not possible to “unravel” the domain and establish where Herefordshire’s SOAs sit in the two sub-domains separately. However, most of the SOAs in rural Herefordshire fall into the most deprived 10% in England in terms of access to services and housing. See Figure 2 below.

Further Information

The above results and the following maps just give a flavour of the wealth of information that can be extracted from the IMD 2004. For more information on particular areas, each domain, or aspects of the methodology, please contact the Herefordshire Council Research Team on 01432 260495.

Figure 1 - Maps of overall IMD 2004 - National ranks

(Reworked after ODPM released revisions on 18th June 2004 as errors were discovered in the data released, by them in May)

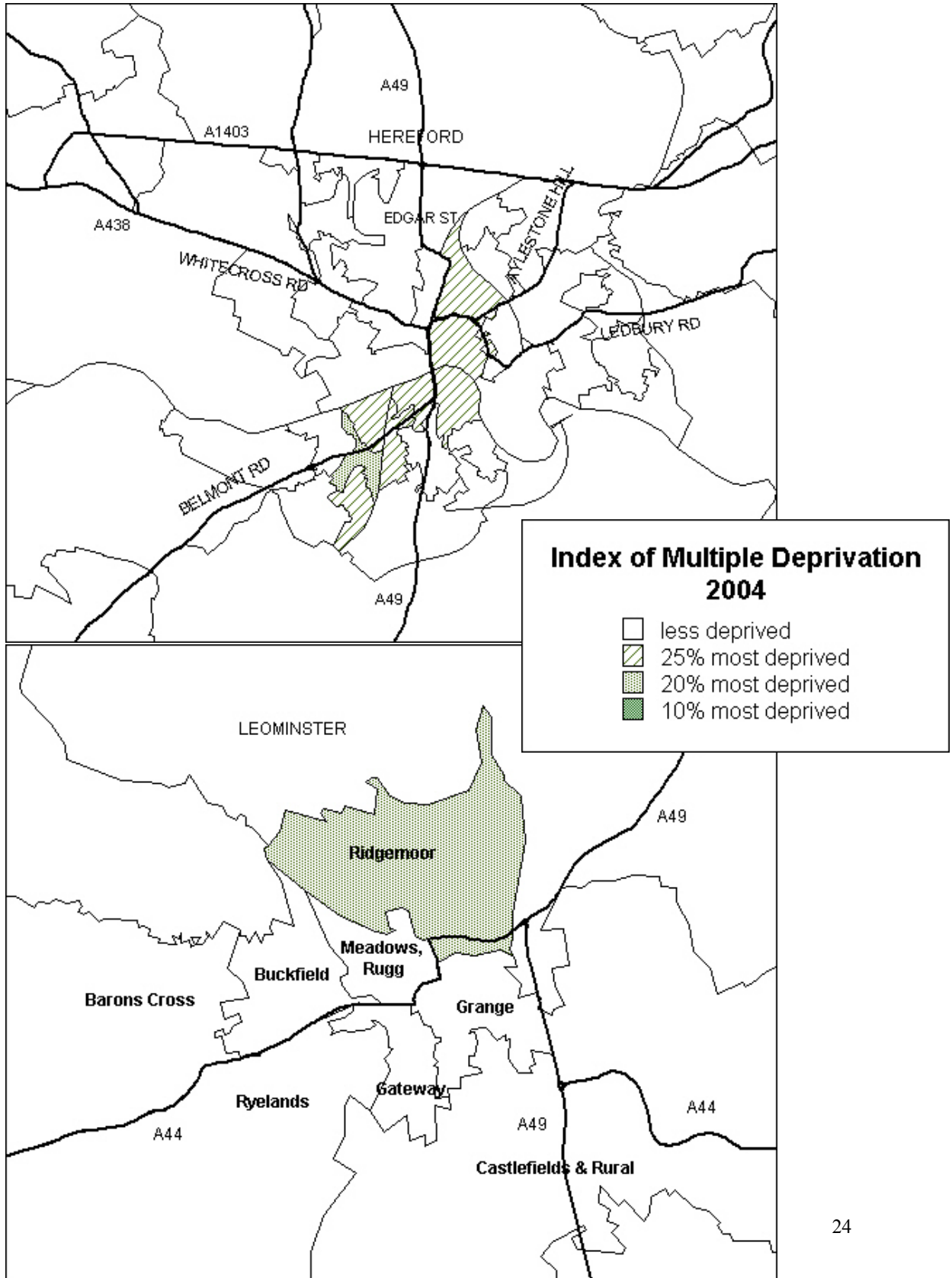


Figure 2 – Barriers to Housing and Services Domain

