



Herefordshire's Population Trends

Herefordshire Council Research Team
June 2008



Outline

- Define 'population'
- What population data is available
 - Official statistics
 - Figures produced by the Research Team
- Previous & expected trends
 - Overall growth
 - Changes in age structure
- Population around the county
- Migration
 - Within-UK
 - International



What do we mean by 'population'?

○ Current definition is 'usually resident population':

- Self-defined for most people
- Students at term-time address
- Armed Forces at place of residence
- People living in communal establishments for 6 months or more
- International migrants are only counted if they intend to move countries for *at least a year*

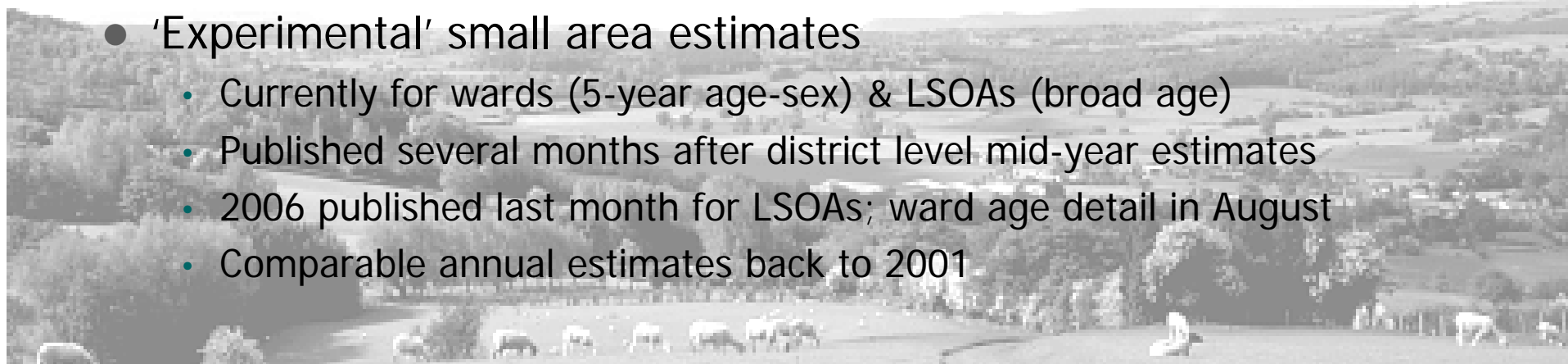


Available Data



Population estimates from ONS

- Census gives a full count every 10 years
 - 2001 most recent
 - Small geographic detail (output areas, parishes, LSOAs, wards)
- Mid-year estimates for other years
 - Local authority district level
 - 5-year age-sex groups, but also single year for aggregating
 - Published each August for previous year
 - 2006 most recent; 2007 published in August
 - New methodology last year for 2006; 2002-05 were revised
- 'Experimental' small area estimates
 - Currently for wards (5-year age-sex) & LSOAs (broad age)
 - Published several months after district level mid-year estimates
 - 2006 published last month for LSOAs; ward age detail in August
 - Comparable annual estimates back to 2001



Other population data from ONS

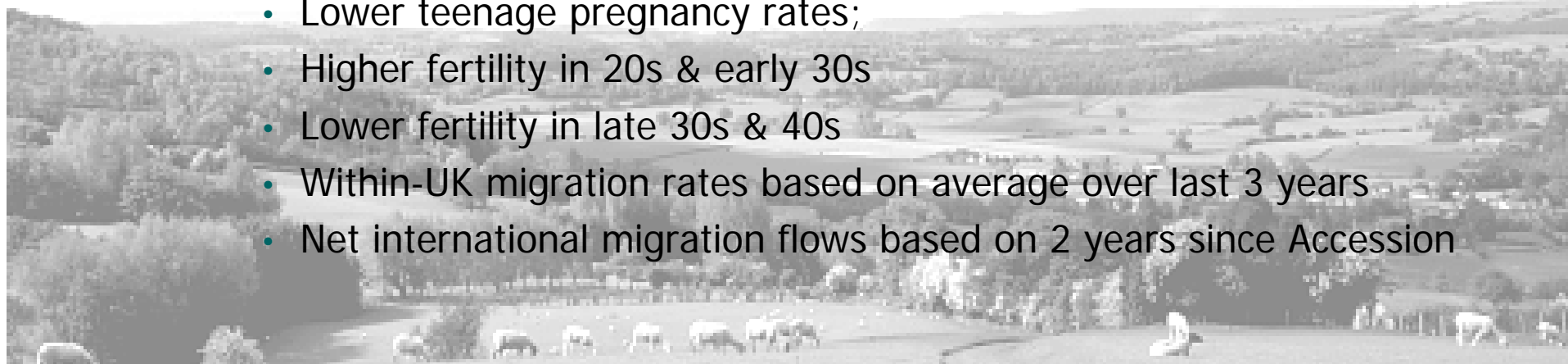
- Vital Statistics
 - Annual count of registered births & deaths (ward level)
- Internal migration estimates
 - Annual estimate of moves to & from Herefordshire within UK, based on NHS re-registrations
- International migration estimates
 - As 'component of change' within county mid-year estimates, modelled using IPS, LFS & Census
 - Change in methodology was reason behind revisions to mid-year estimates last year
- Population Projections
 - Published every 2 years at LA district level (2006-based this month)
 - What would happen if recent trends continued, not taking housing provision into account



Figures the Research Team produce

○ Population forecasts

- Only for Herefordshire as a whole
- Most recent are 2006-based – published in April
- Forecast to 2026 (previously only to 2011)
- Future trends in fertility/mortality/migration based on assumptions for England & Wales from ONS' 2006-based national population projections, with local adjustments where appropriate:
 - Lower mortality rates at all ages 55+ (except for 85+ males);
 - Lower teenage pregnancy rates;
 - Higher fertility in 20s & early 30s
 - Lower fertility in late 30s & 40s
 - Within-UK migration rates based on average over last 3 years
 - Net international migration flows based on 2 years since Accession



Producing population forecasts (1)

○ Cohort survival method:

Take base population (ONS mid-year estimate)

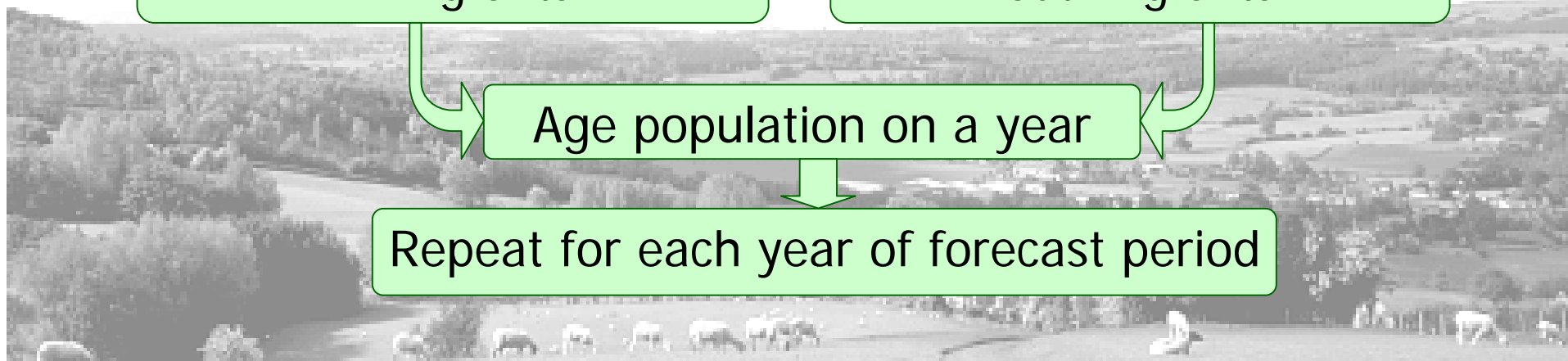
Apply age-specific fertility & age-sex-specific mortality & migration rates (future trends as predicted nationally by ONS; local differences calculated using recent years' observations)

Add expected births & in-migrants

Subtract expected deaths & out-migrants

Age population on a year

Repeat for each year of forecast period



Producing population forecasts (2)

- Adjust to meet housing provision:
 - Two stages:
 - 4,300 new dwellings 2006-2011 (UDP)
 - 12,300 new dwellings 2011-2026 (RSS)
 - For each stage:
 - Remove communal establishment population
 - Apply predicted 'headship' rates (from CLG) to calculate change in number of households given projected population
 - Compare to anticipated net new dwellings
 - Adjust internal migration rates as appropriate



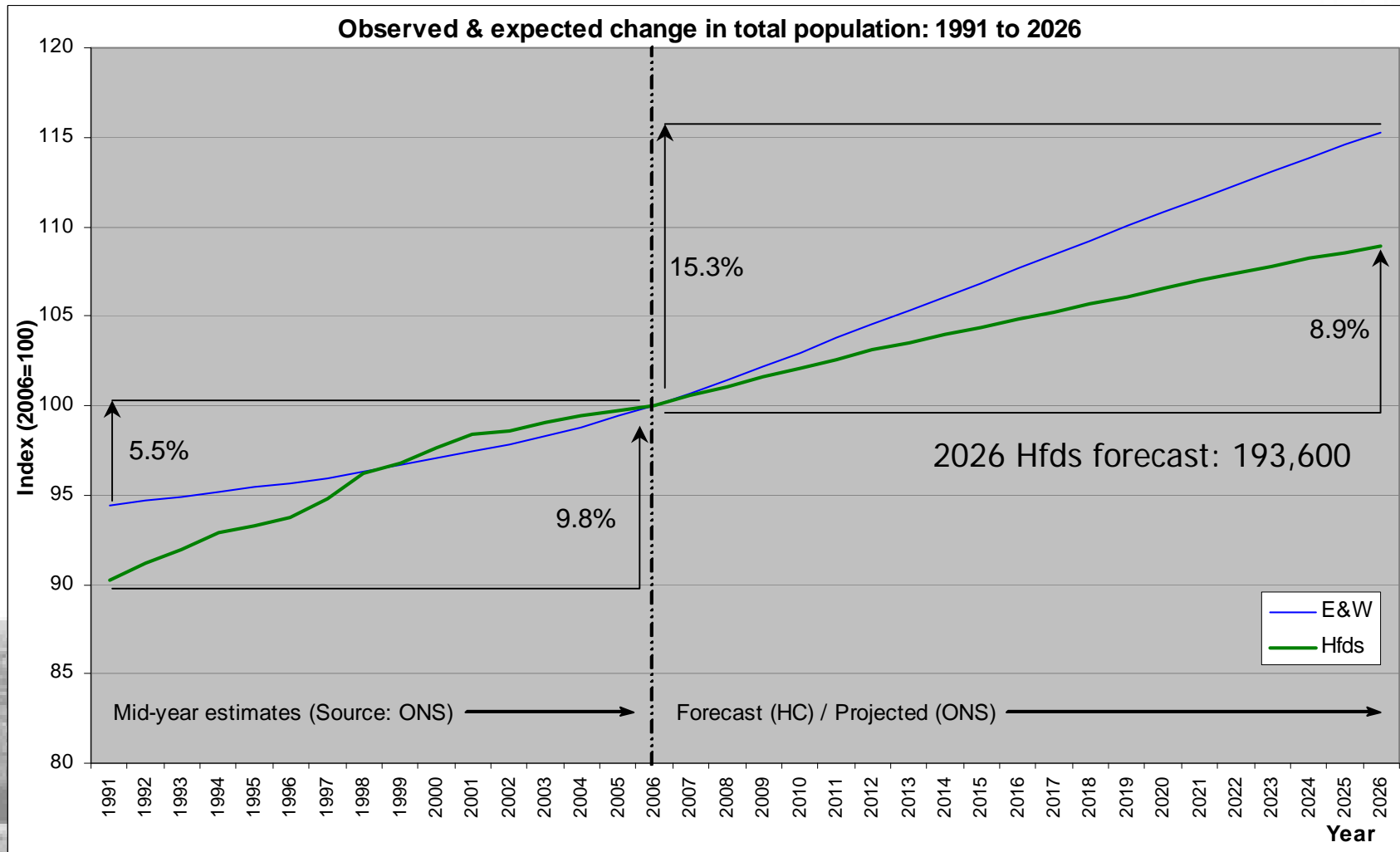
Herefordshire's Population



Herefordshire's current population

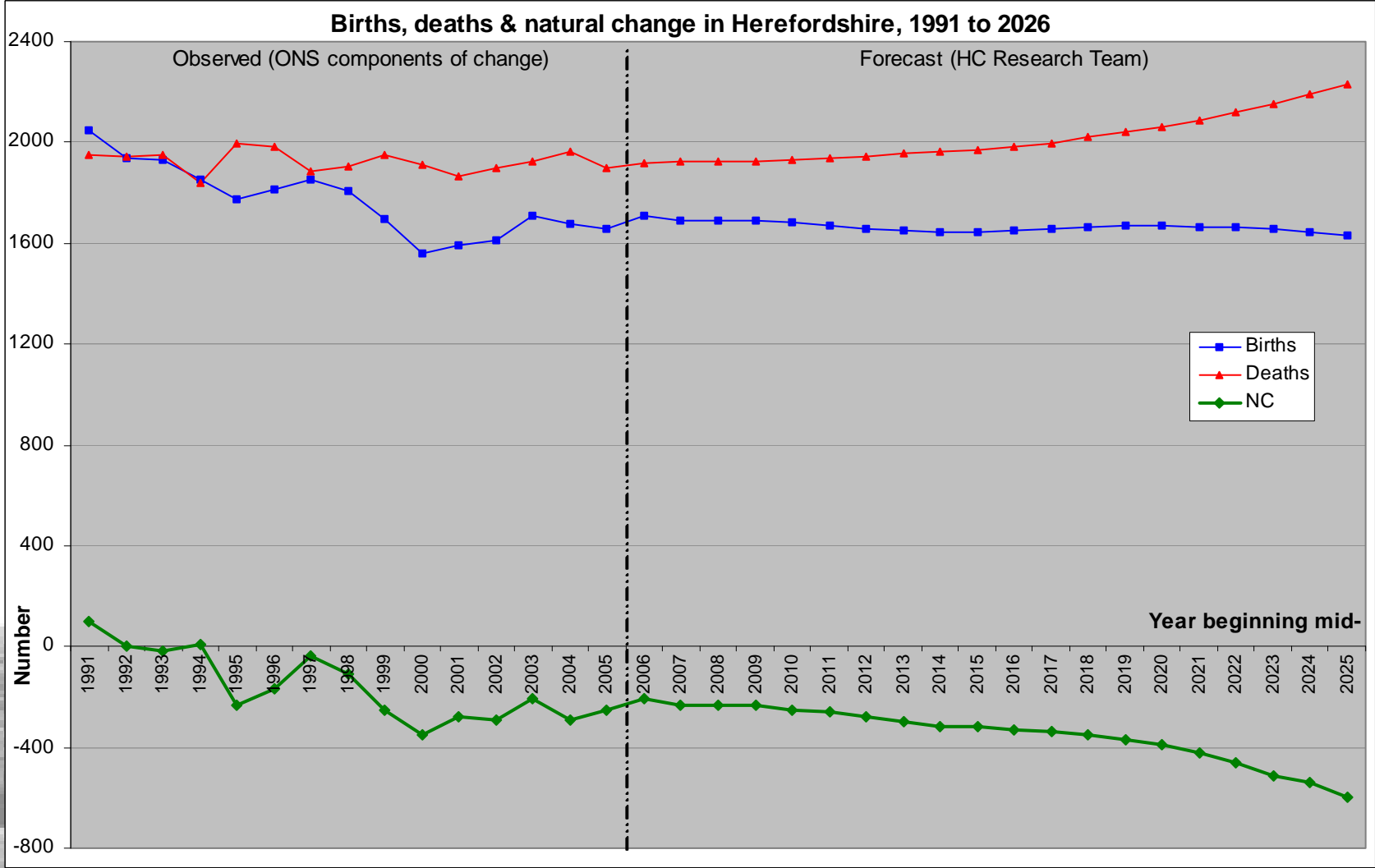
- 2006 mid-year estimate: 177,800
- 51.1% female; 48.9% male
- % aged under 16:
 - Hfds: 18.0%
 - E&W: 19.0%
- % aged 16-29:
 - Hfds: 13.4%
 - E&W: 18.3%
- % aged 30 to retirement:
 - Hfds: 43.6%
 - E&W: 43.9%
- % retirement age & over:
 - Hfds: 23.8%
 - E&W: 18.8%

Population growth



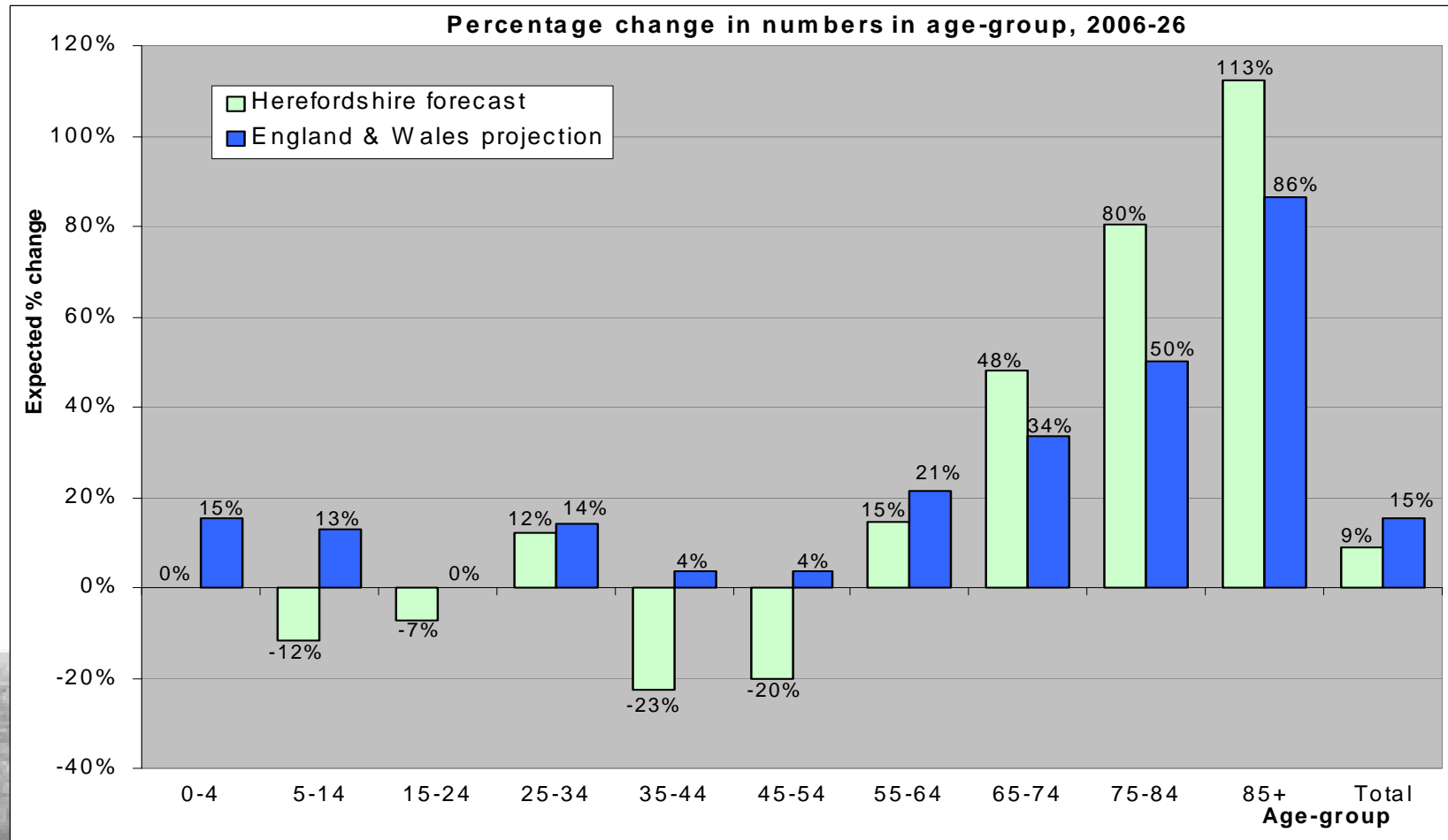
Sources: ONS mid-year estimates & 2006-based national population projections © Crown copyright; Hfds Council Research Team 2006-based population forecasts.

Natural change in Herefordshire



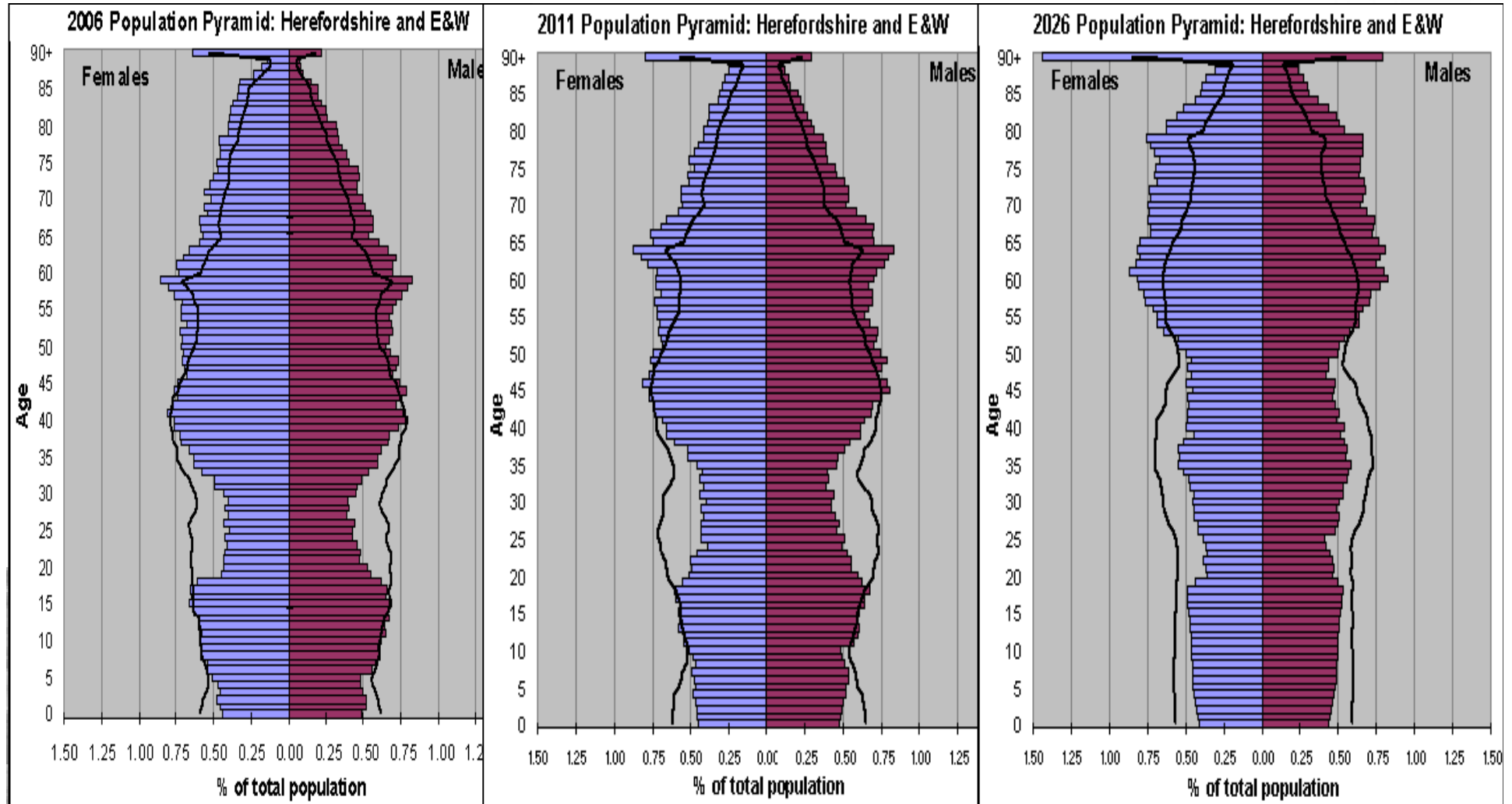
Sources: ONS mid-year estimates © Crown copyright; Hfds Council Research Team 2006-based population forecasts.

Forecast growth in Herefordshire: Age



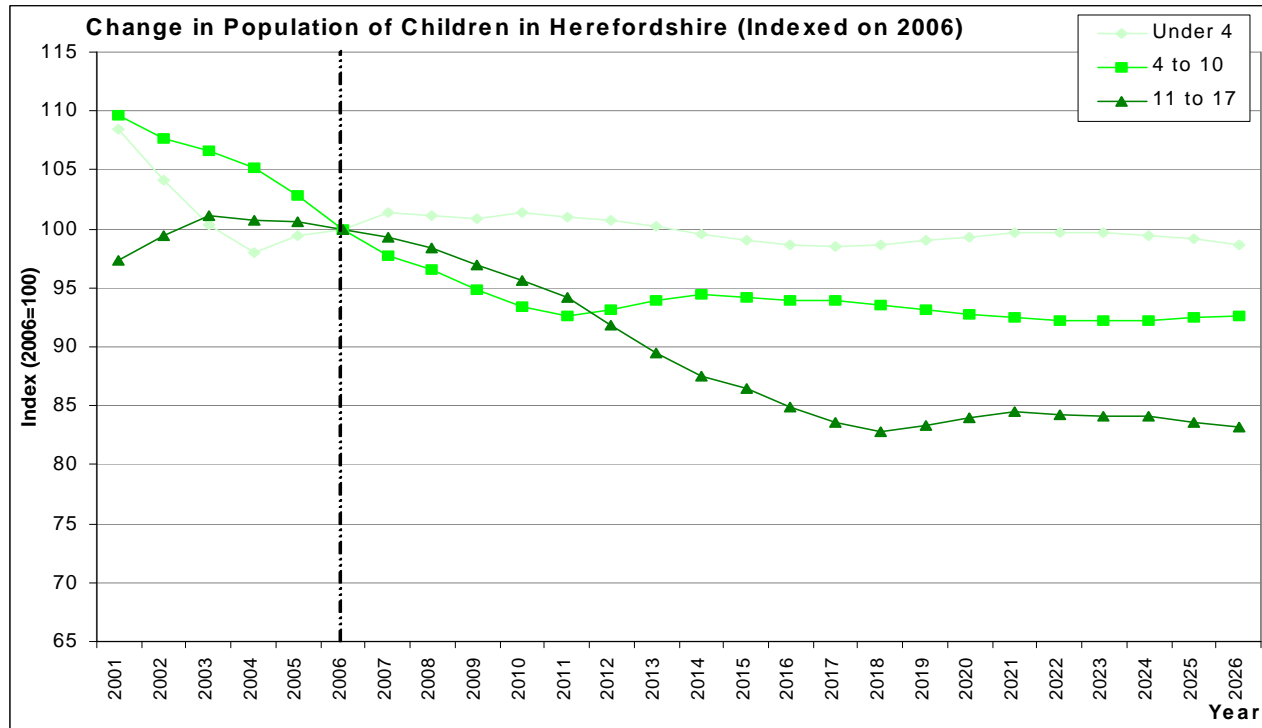
Sources: ONS 2006-based national population projections © Crown copyright; Hfuds Council Research Team 2006-based population forecasts.

Changing age structure



Sources: ONS mid-year estimates & 2006-based national population projections © Crown copyright; Hfds Council Research Team 2006-based population forecasts.

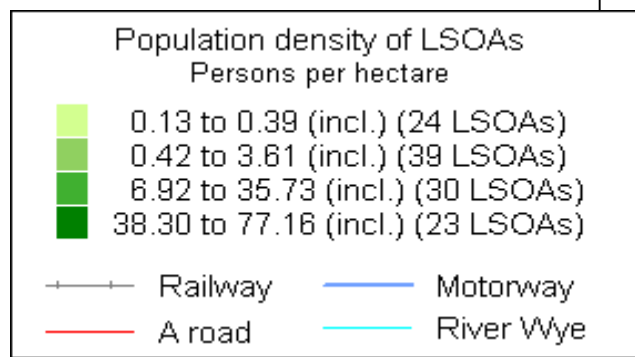
Expected fall in number of children



- **Under 4s:** fell by 11% 2001-04 before rising due to increase in births; now at 6,900 & expected to stay fairly constant
- **Primary school age:** fell 9% 2001-06; will continue to fall before levelling off around 5-8% below 2006 levels
- **Secondary school age:** been falling since 2003; will continue to until 2018 before levelling off around 15-17% below 2006 levels

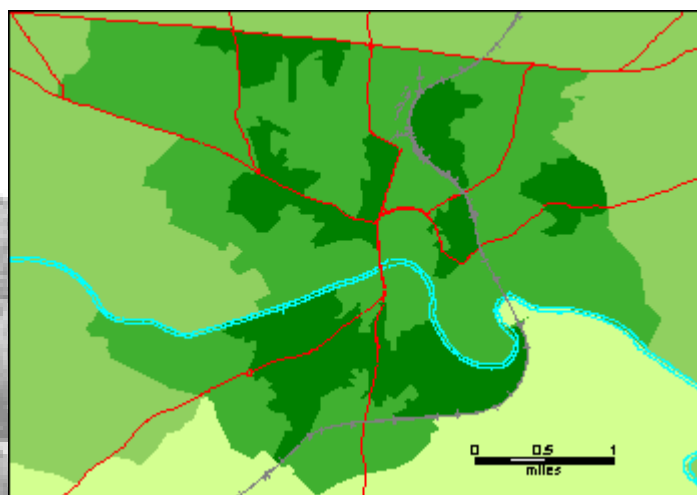
Source: Hfds.Council Research Team 2006-based population forecasts.

Population Density of Herefordshire LSOAs, 2006

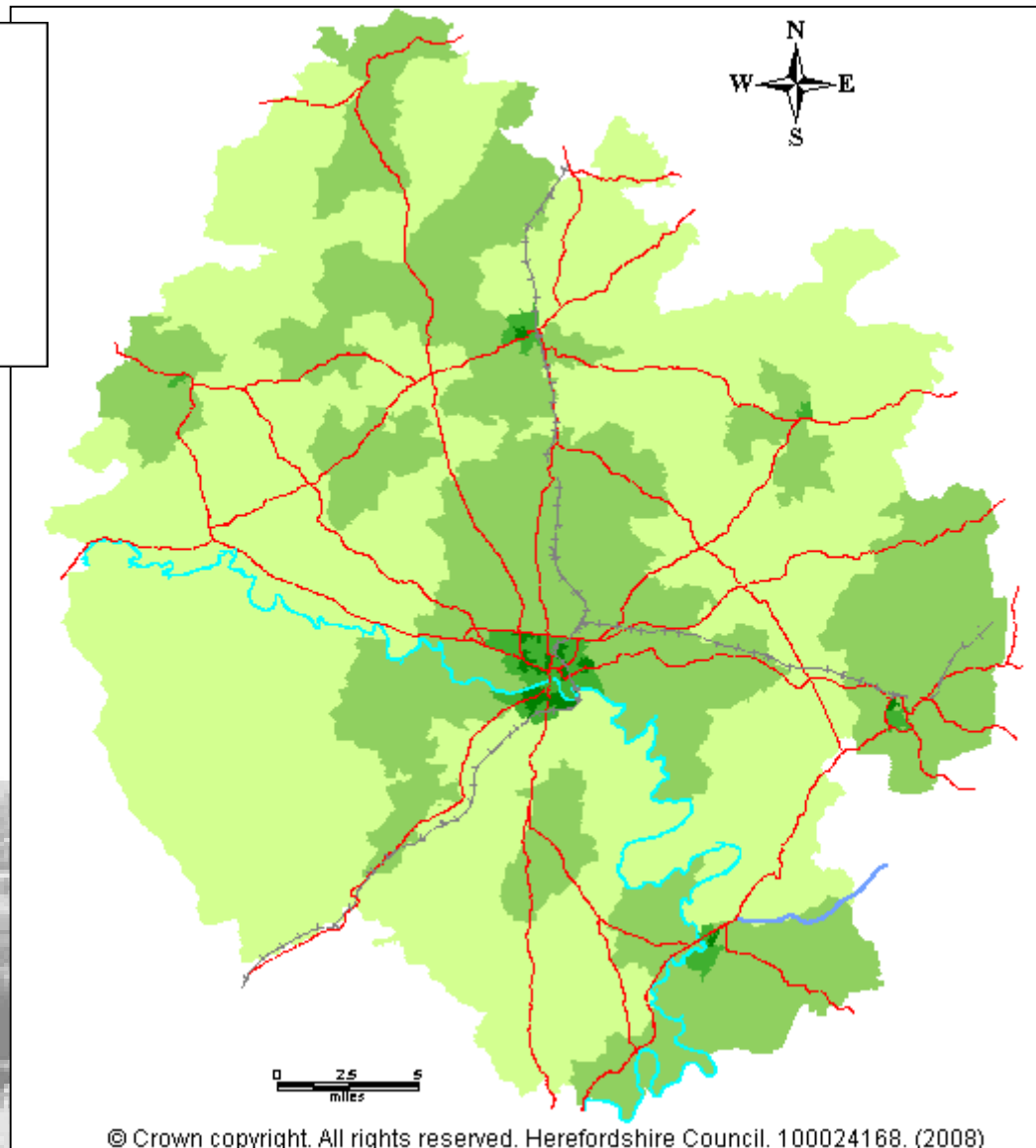


Herefordshire = 0.82

Inset map of Hereford City

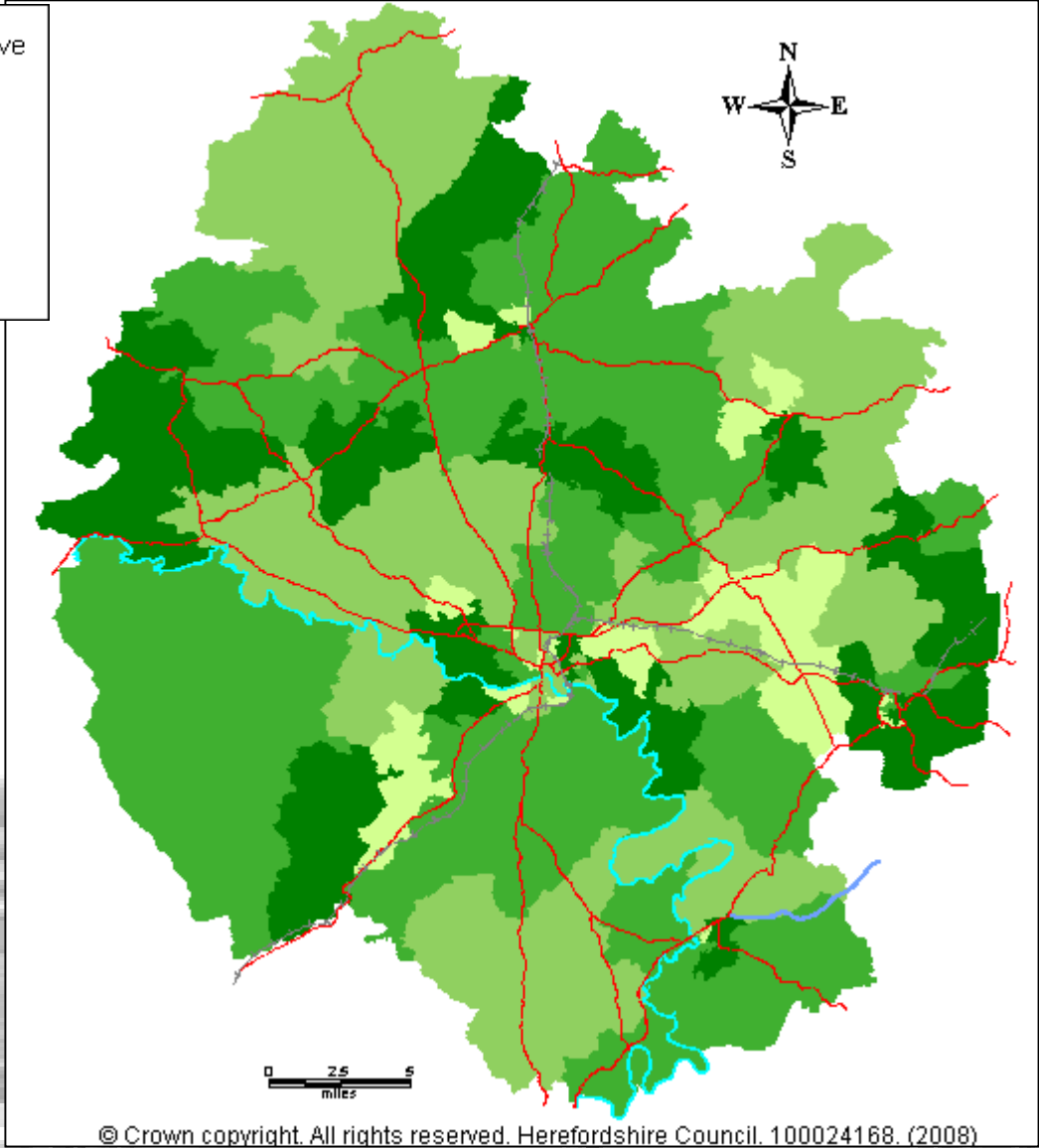
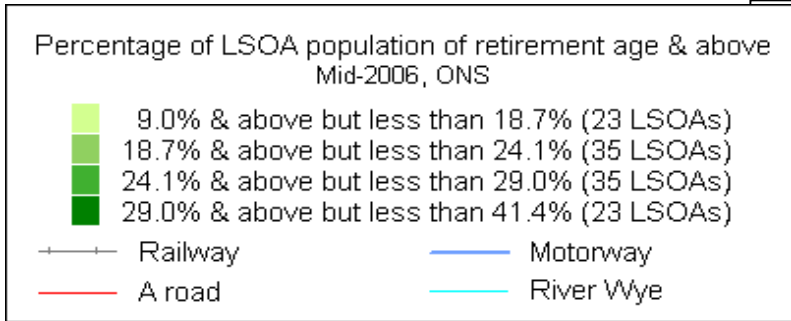


Source: ONS Small Area Population Estimates, mid-2006. Crown copyright

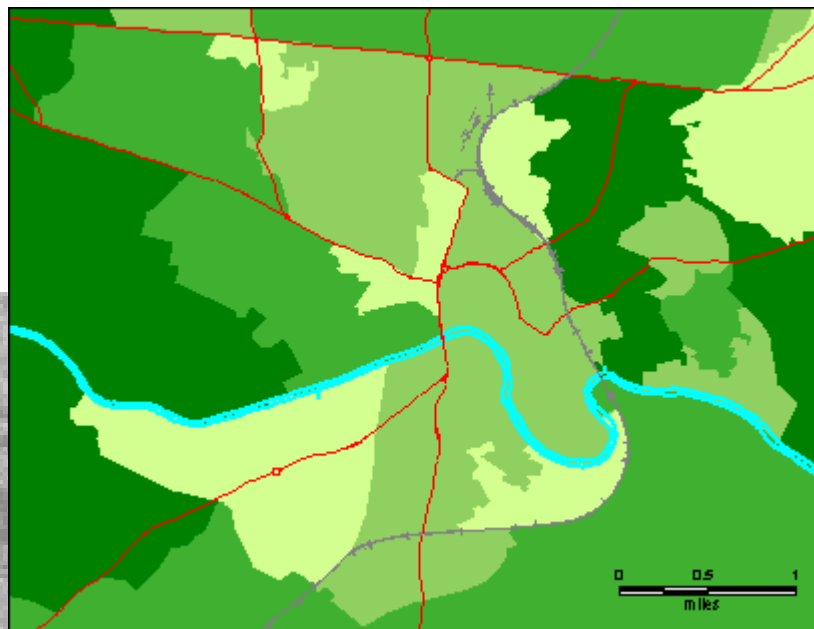


© Crown copyright. All rights reserved. Herefordshire Council. 100024168. (2008)

% of Population of Herefordshire LSOAs aged 60/65+, 2006



Inset map of Hereford City



Source: ONS Small Area Population Estimates, mid-2006. Crown copyright

Where older people live

○ % of total population who are of retirement age & above:

- In Herefordshire: 23.8%
 - in rural Herefordshire: 25.2%
 - in urban Herefordshire: 22.3%

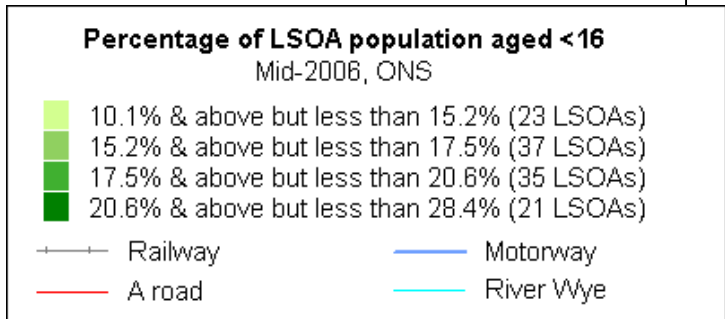
○ % living in rural areas:

- of total population: 54.5%
- of people of retirement age +: 57.5%

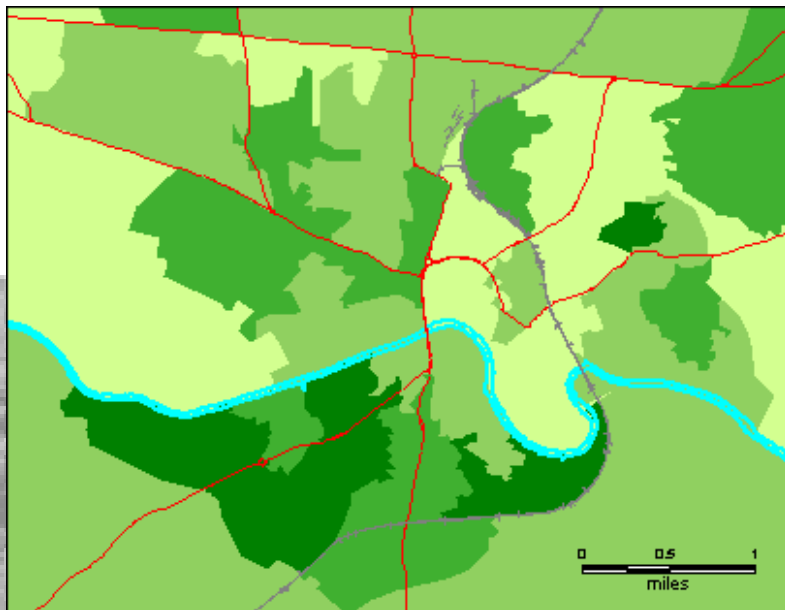


Source: ONS Small Area Population Estimates, mid-2006. Crown copyright

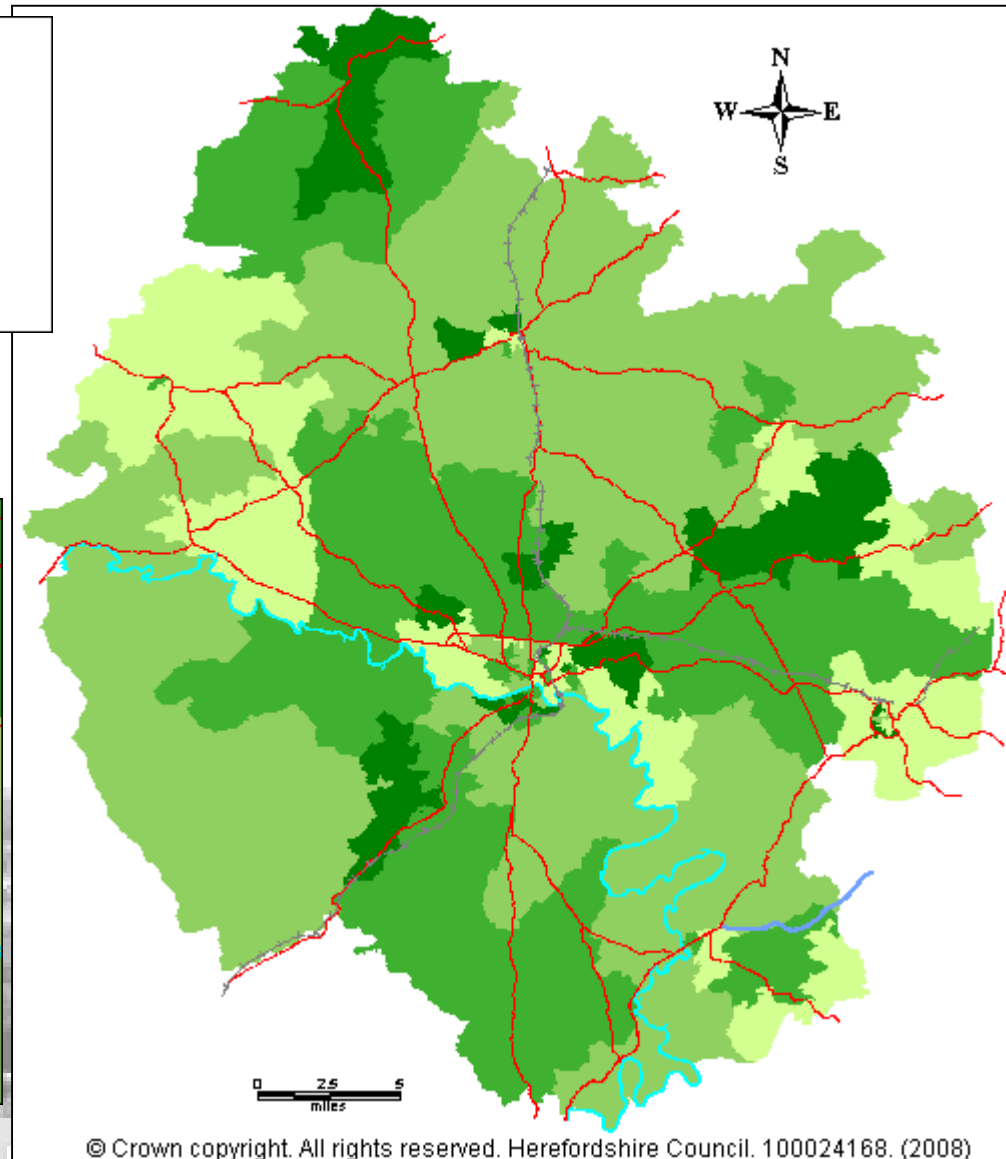
% of Population of Herefordshire LSOAs aged <16, 2006



Inset map of Hereford City



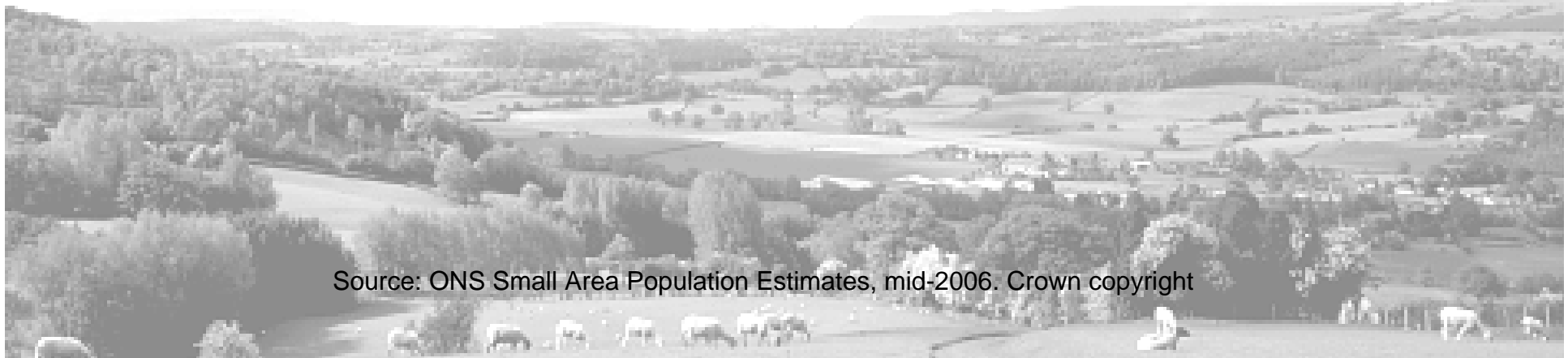
Source: ONS Small Area Population Estimates, mid-2006. Crown copyright



© Crown copyright. All rights reserved. Herefordshire Council. 100024168. (2008)

Where children & younger people live

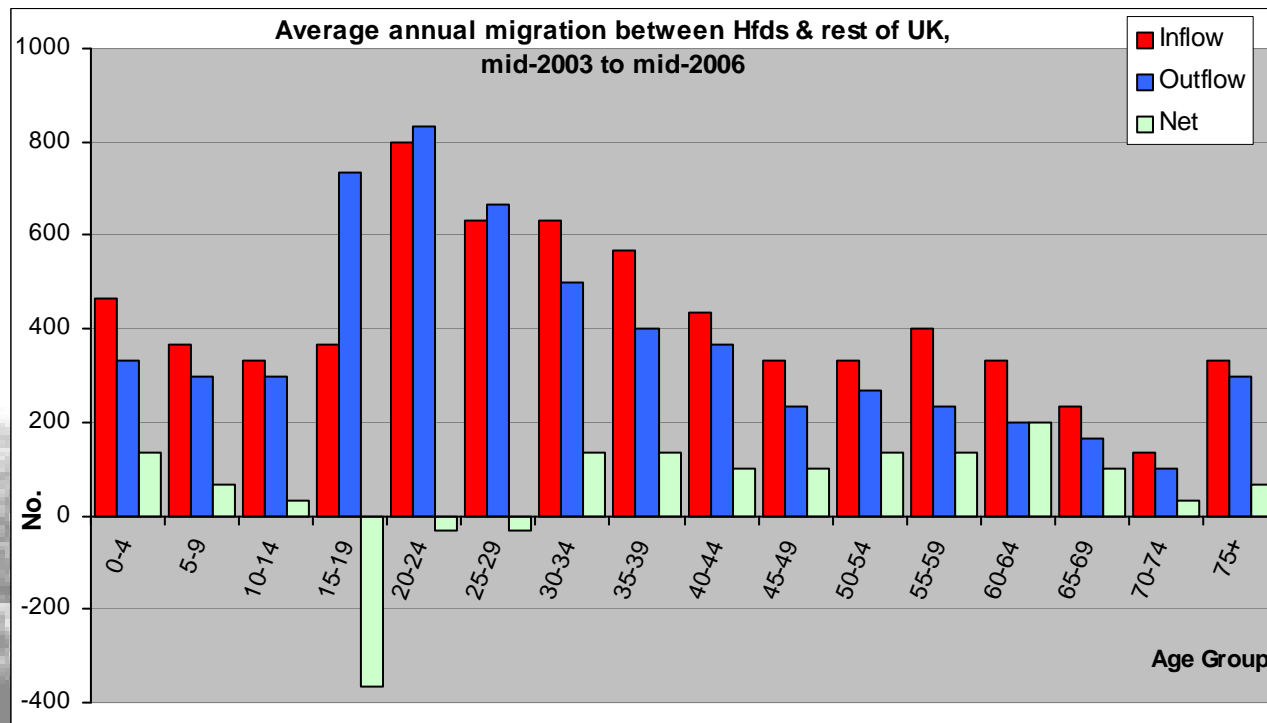
- % of total population who are aged <16:
 - in Herefordshire: 18.0%
 - in rural Herefordshire: 17.6%
 - in urban Herefordshire: 18.5%
- % living in rural areas:
 - of total population: 54.5%
 - of people aged <16: 53.2%



Source: ONS Small Area Population Estimates, mid-2006. Crown copyright

Age of migrants between Hfds & UK

- From NHS re-registration data, mid-2003 to mid-2006:
 - Largest flows (in & out) are in the 20-24 age group
 - Net in-flow of all age groups except 15 to 29s (only notable out-flow is of 15-19s)



Source: Internal migration estimates, ONS © Crown copyright

Age of migrants btwn Hfds & UK (2)

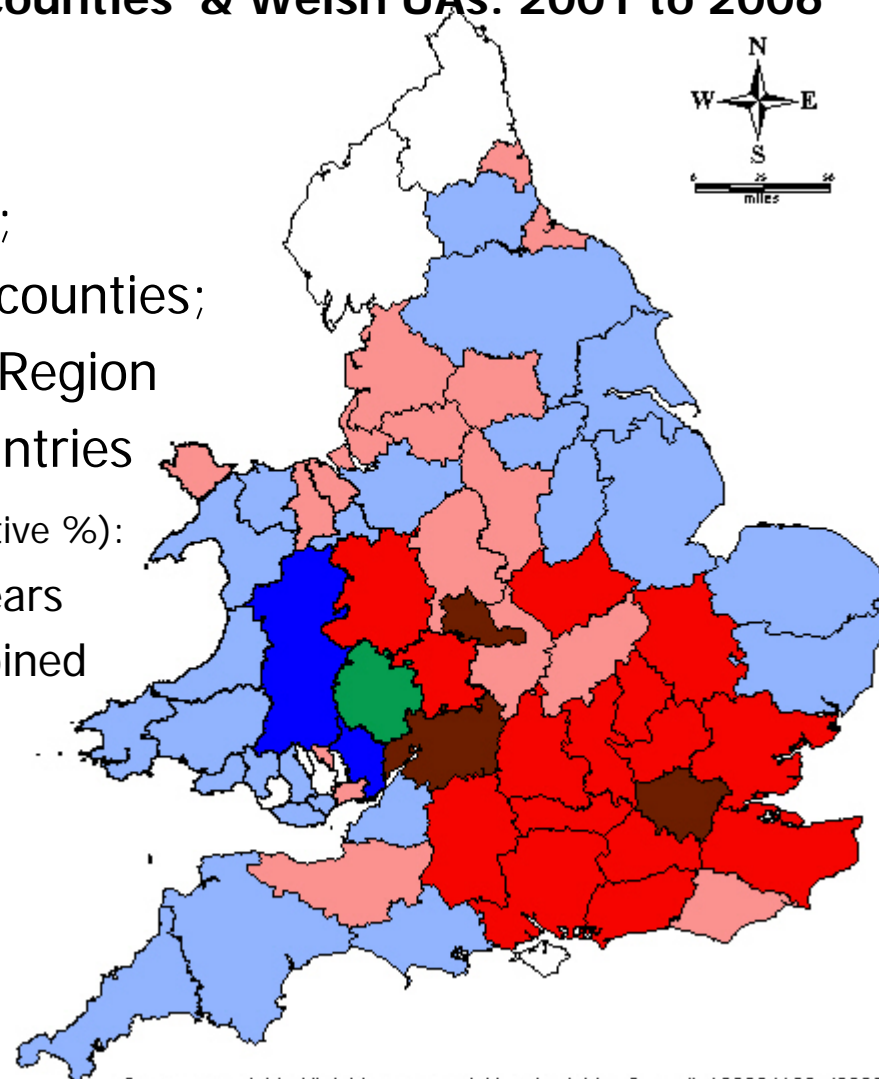
- Average net flows as proportion of the population in age group in Herefordshire:
 - 15-24 year-olds:
 - Average net 'loss' of 400 p.a.
 - 2% of population of 15-24 year-olds
 - Rutland UA 'lose' 6% p.a.; Wandsworth 'gain' 6%



Net migration to/from Herefordshire

For period mid-01 to mid-06: **Total Net Flows between Hfds and English 'counties' & Welsh UAs: 2001 to 2006**

- **Net in-flow** of 4,700
 - Average of 940 p.a.
- 72% of these from London & SE;
- 26% from neighbouring English counties;
- 13% from other parts of WMids Region
- More people moved to other countries than vice versa (so these would have negative %):
 - net loss of 700 to Wales over 5 years
 - Net loss of 100 to Scot & NI combined



**Total Net Migration to/from Herefordshire
mid-2001 to mid-2006**

- Net in-flow: 500 to 1,180
- Net in-flow: 100 or more but < 500
- Net in-flow: > 0 but < 100
- Zero net flow
- Net out-flow: < 0 but > -100
- Net out-flow: -100 to -180
- Herefordshire

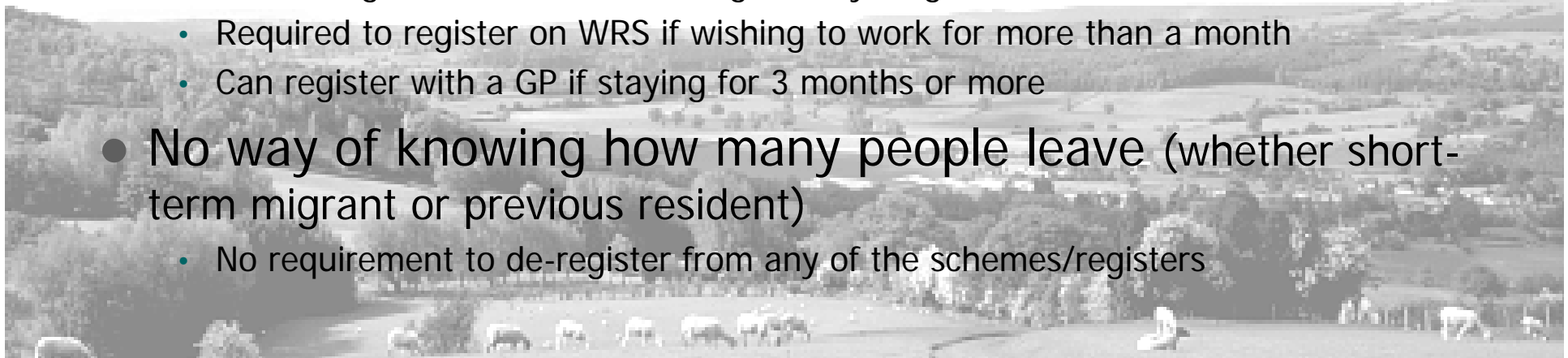


Source: Internal migration estimates, ONS © Crown copyright

Crown copyright. All rights reserved. Herefordshire Council. 100024168. (2008)

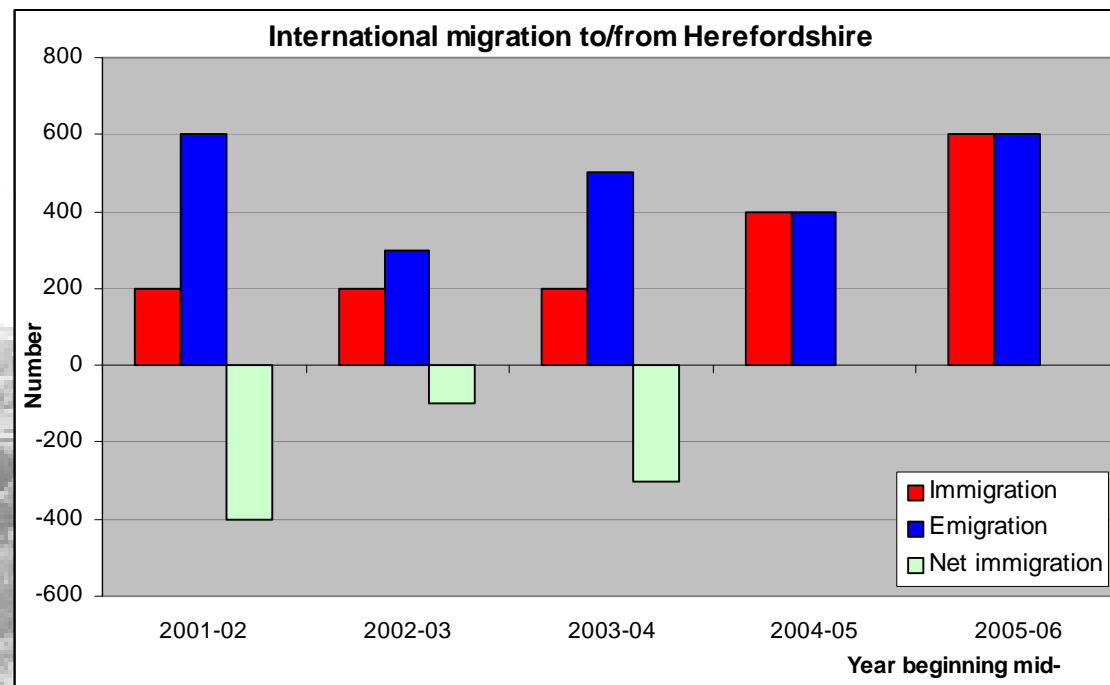
International migration...but not quite

- No definitive count of seasonal & migrant workers in Hfds
 - 3,890 new NINo numbers allocated to overseas nationals with residential address in Hfds, 2004-2006 financial years (could be anyone aged 16+)
 - 4,730 workers from A8 states on WRS scheme with employer with a Hfds address, mid-2004 to mid-2006 (excludes self-employed)
 - 1,100 people registering with a Hfds GP with last address overseas mid 2005-06 (all ages; working or not)
 - Between 8-9,000 workers were expected to be employed on Hfds farms during 2007 (although 2/5^{ths} expected to be SAWS – i.e. <6 months)
- No way of knowing how long they stay for
 - Should register for NINo if working for any length of time
 - Required to register on WRS if wishing to work for more than a month
 - Can register with a GP if staying for 3 months or more
- No way of knowing how many people leave (whether short-term migrant or previous resident)
 - No requirement to de-register from any of the schemes/registers



International migration

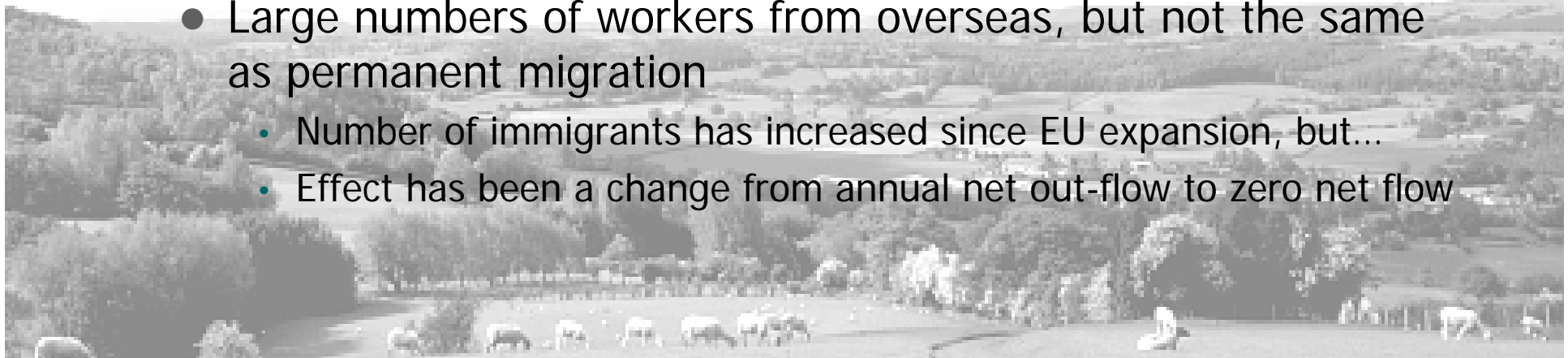
- Change in country of residence for *at least a year*
- From ONS mid-year estimates, using new methodology:
 - Immigration to Hfds has increased since expansion of EU
 - Emigration fluctuates annually; levels haven't really changed
 - Net effect has changed from negative pre-Accession to zero post-Accession



Source: ONS mid-year estimates © Crown copyright

Conclusions

- Herefordshire has an older age structure than England & Wales as a whole
 - Discrepancy is expected to increase
- Negative natural increase means that growth is entirely fuelled by net in-migration
 - The majority of net in-migrants come from London & SE
 - On average, net in-flows each year from rest of UK of all age-groups except between 15 & 30 – not all retirees!
 - Large numbers of workers from overseas, but not the same as permanent migration
 - Number of immigrants has increased since EU expansion, but...
 - Effect has been a change from annual net out-flow to zero net flow



Any Questions?

Contact details:

Charlotte Devereux, Research Officer

Tel: 01432 260498

E-mail: researchteam@herefordshire.gov.uk

Web address: www.herefordshire.gov.uk/research

