

Jobcentre Plus

Impact of the Economic Downturn

Phil Vallely

Jobcentre Plus - Redundancy Team Manager

jobcentreplus

Part of the Department
for Work and Pensions

Some things you should know:-

- All of this data has been taken off NOMiS.
- Sorry, but February data is not published yet.
- I do produce most of this data on a monthly basis

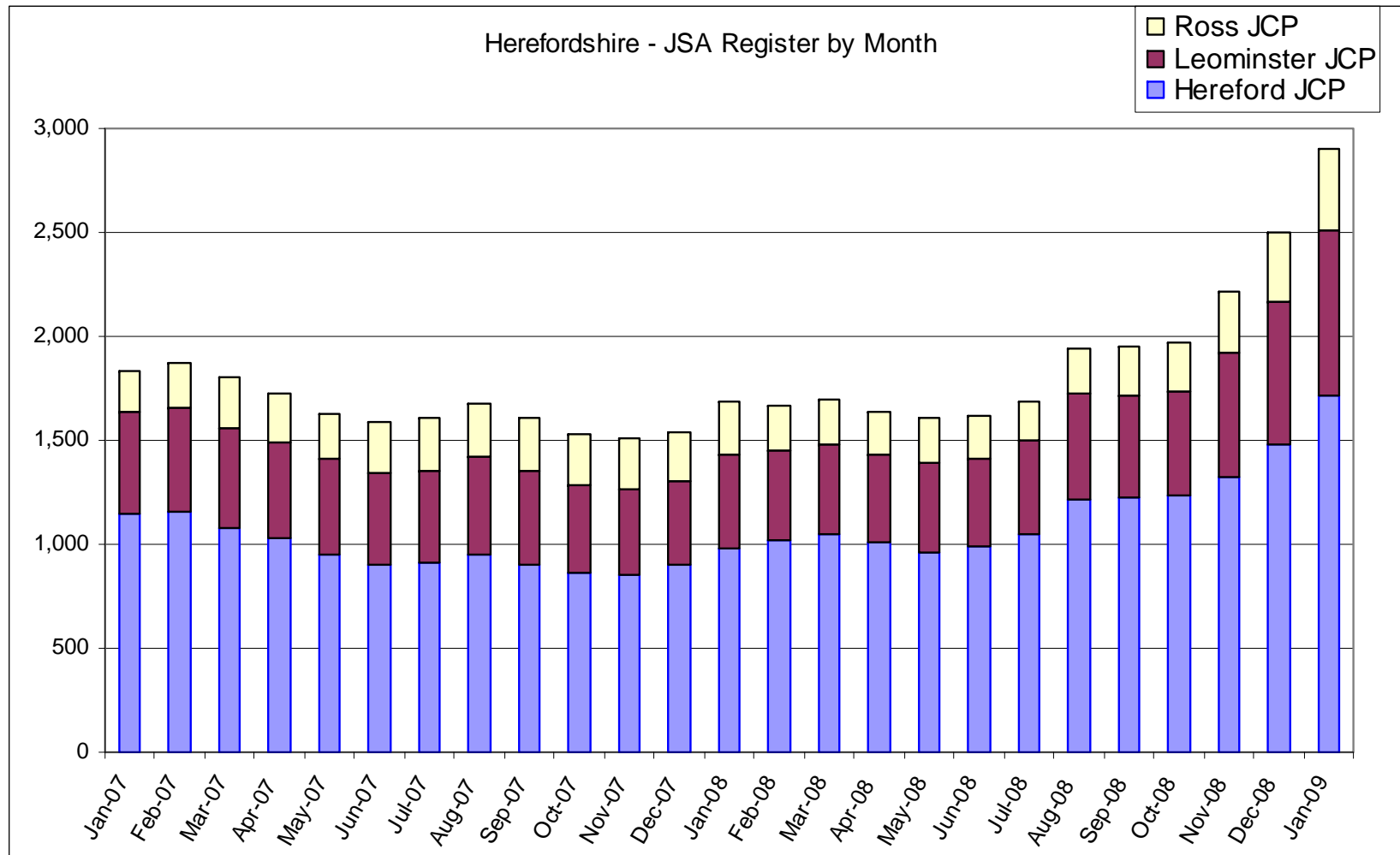
What is the scale of the down turn? How has it changed since April

local authority	Current Number Unemployed and claiming JSA			Percentage Increase since April 2008		
	Male	Female	Total	Male	Female	Total
Birmingham	31,920	9,896	41,816	28.24%	23.39%	27.06%
Coventry	6,887	2,105	8,992	36.35%	31.81%	35.26%
Dudley	6,391	2,049	8,440	62.99%	35.88%	55.46%
Herefordshire	1,896	654	2,550	79.55%	57.59%	73.35%
Sandwell	8,170	2,618	10,788	54.44%	31.36%	48.13%
Shropshire	3,086	1,053	4,139	77.56%	54.40%	71.03%
Solihull	3,115	1,109	4,224	70.22%	61.19%	67.75%
Staffordshire	11,771	4,011	15,782	104.11%	70.97%	94.53%
Stoke on Trent	5,717	1,718	7,435	50.29%	39.67%	47.70%
Telford and Wrekin	2,974	990	3,964	88.23%	52.54%	77.84%
Walsall	6,771	2,235	9,006	64.11%	45.89%	59.17%
Warwickshire	7,055	2,456	9,511	75.63%	53.12%	69.20%
Wolverhampton	7,048	2,262	9,310	31.30%	14.53%	26.79%
Worcestershire	7,956	2,877	10,833	92.17%	75.96%	87.58%
West Midlands Total	110,757	36,033	146,790	52.60%	39.26%	49.10%

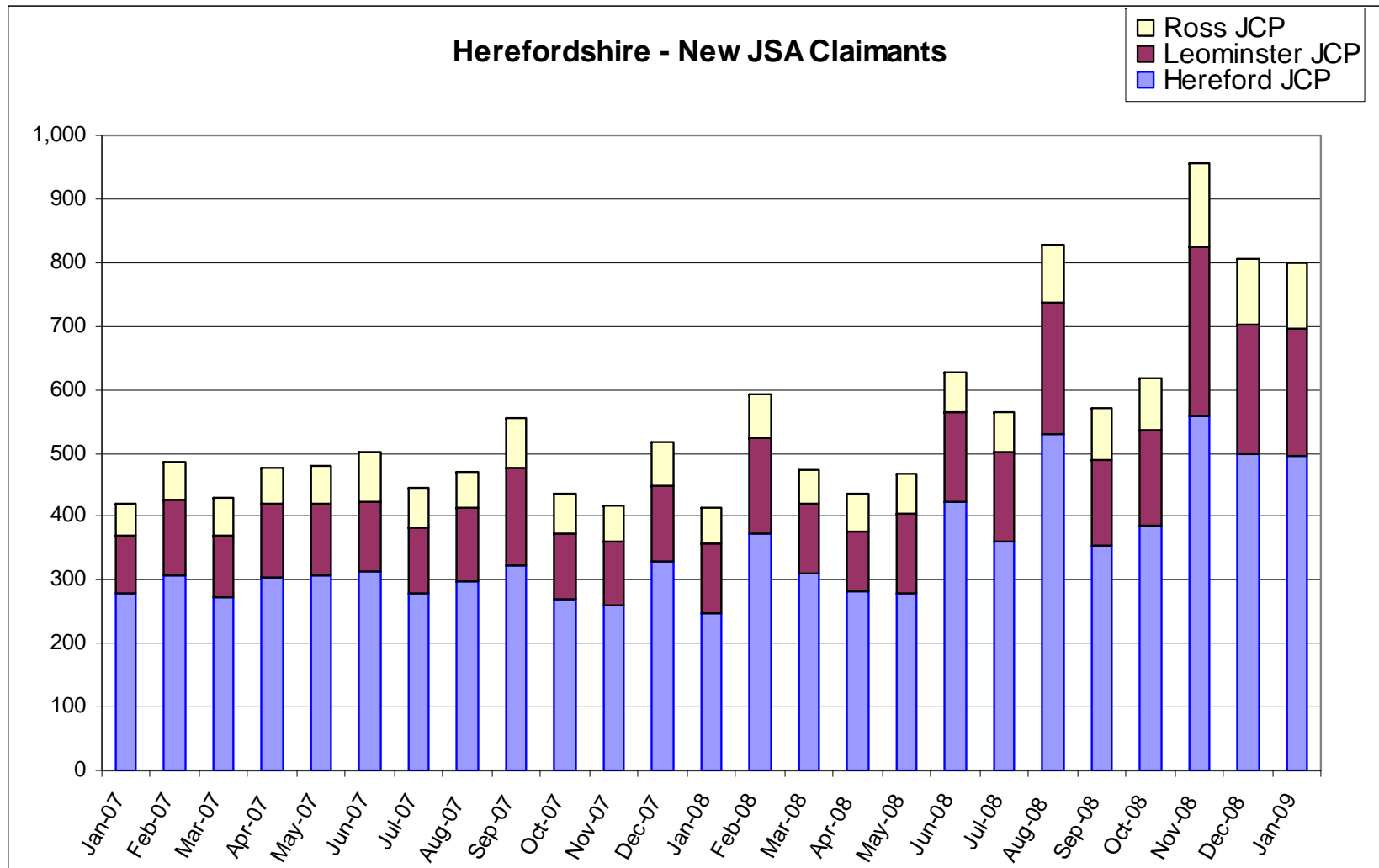
What about the last month? Impact December 2008 – January 2009

local authority	Number Unemployed and claiming JSA			Percentage Increase since December 2008		
	Male	Female	Total	Male	Female	Total
Birmingham	31,920	9,896	41,816	5.52%	5.65%	5.55%
Coventry	6,887	2,105	8,992	11.12%	11.55%	11.22%
Dudley	6,391	2,049	8,440	9.81%	12.03%	10.34%
Herefordshire	1,896	654	2,550	16.18%	17.41%	16.49%
Sandwell	8,170	2,618	10,788	10.61%	6.77%	9.66%
Shropshire	3,086	1,053	4,139	13.29%	21.31%	15.23%
Solihull	3,115	1,109	4,224	11.33%	15.88%	12.49%
Staffordshire	11,771	4,011	15,782	13.54%	14.44%	13.77%
Stoke on Trent	5,717	1,718	7,435	13.70%	14.08%	13.79%
Telford and Wrekin	2,974	990	3,964	13.73%	13.14%	13.58%
Walsall	6,771	2,235	9,006	10.73%	10.04%	10.56%
Warwickshire	7,055	2,456	9,511	16.34%	19.11%	17.04%
Wolverhampton	7,048	2,262	9,310	7.52%	8.70%	7.80%
Worcestershire	7,956	2,877	10,833	15.89%	24.82%	18.14%
West Mids Total	110,757	36,033	146,790	10.30%	11.62%	10.62%

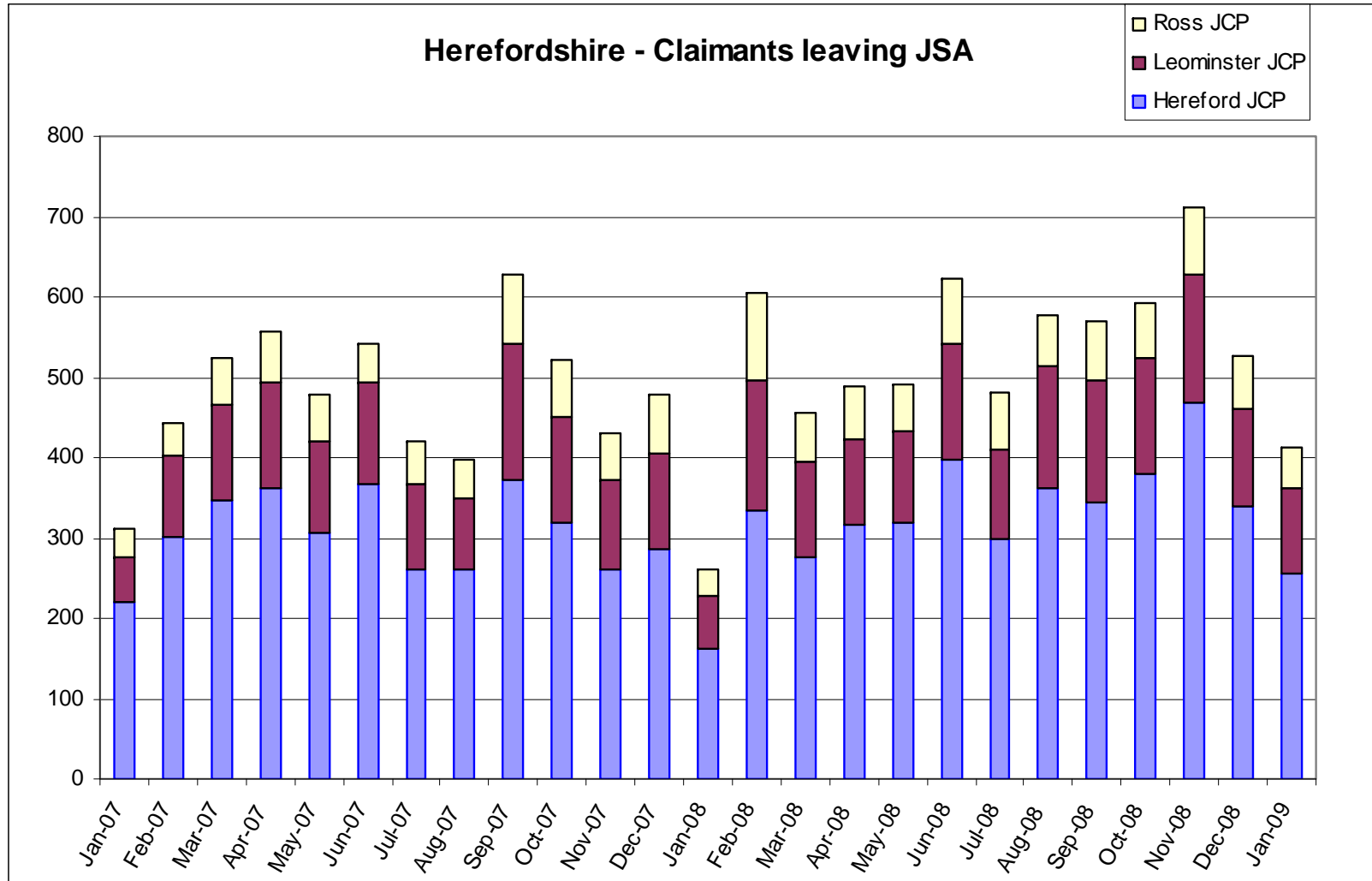
Claimant Count for last 2 years



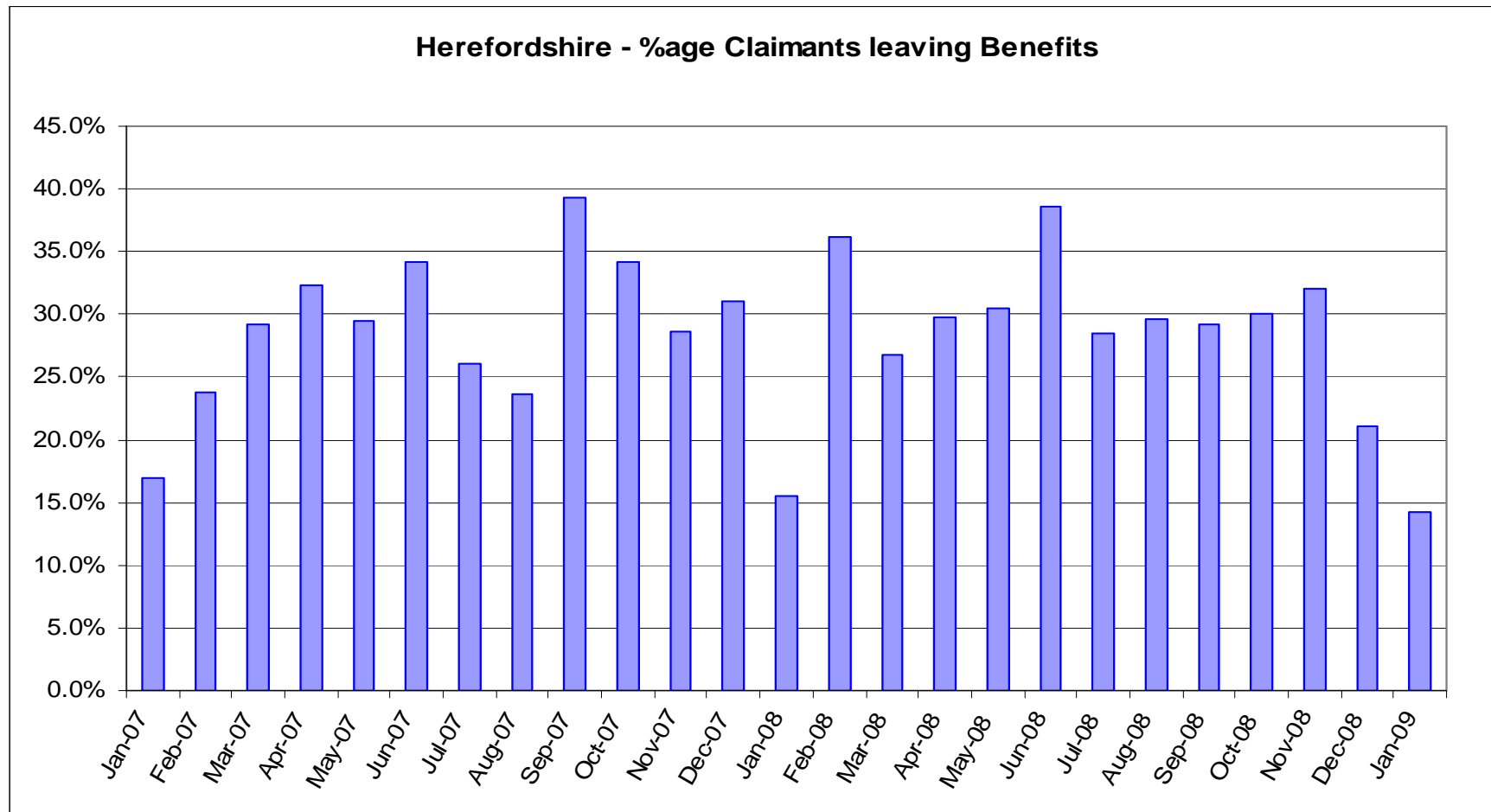
New claims to JobSeeker's Allowance



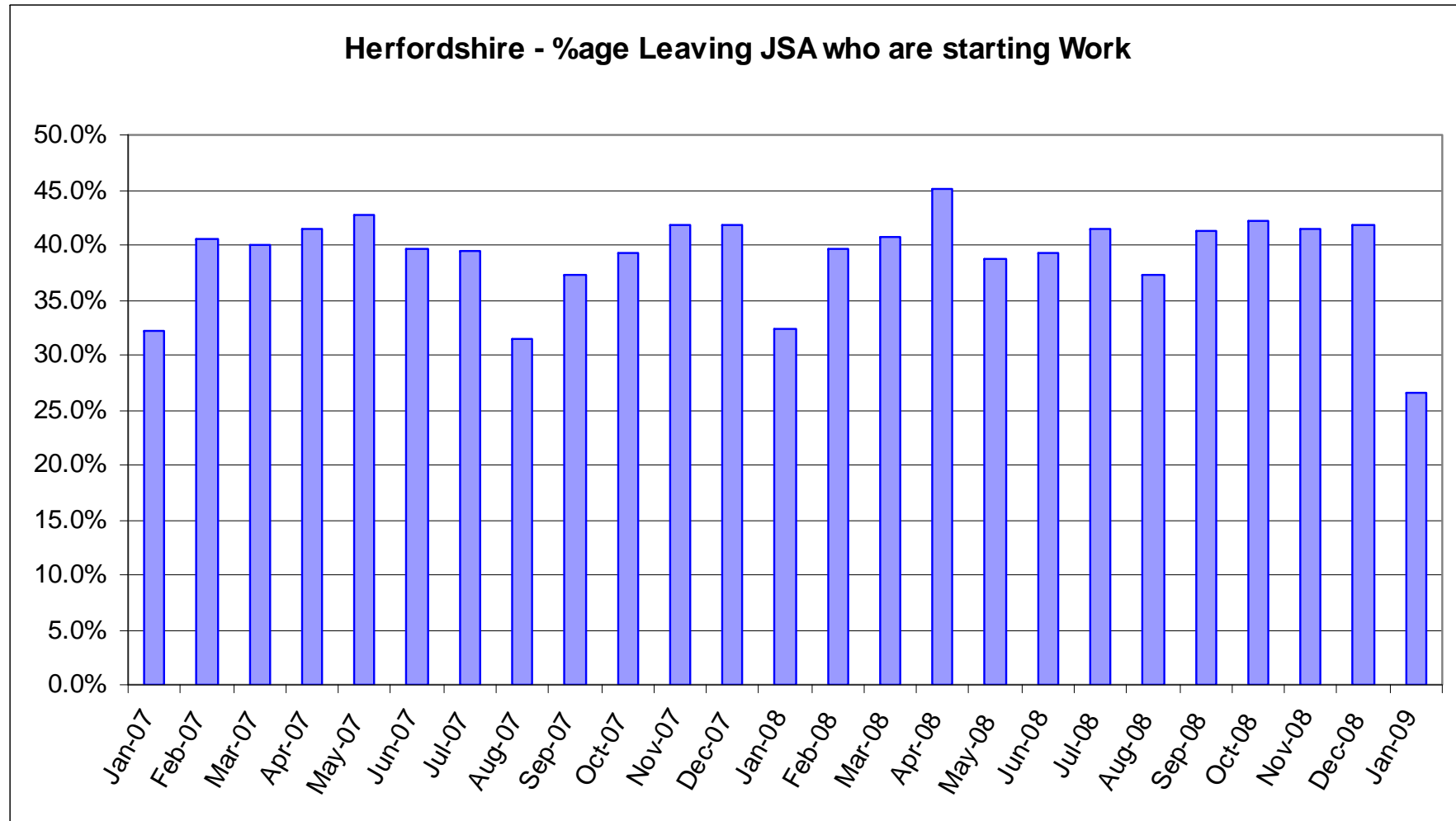
Many are still leaving benefit, though



What percentage of our live load does that reflect?

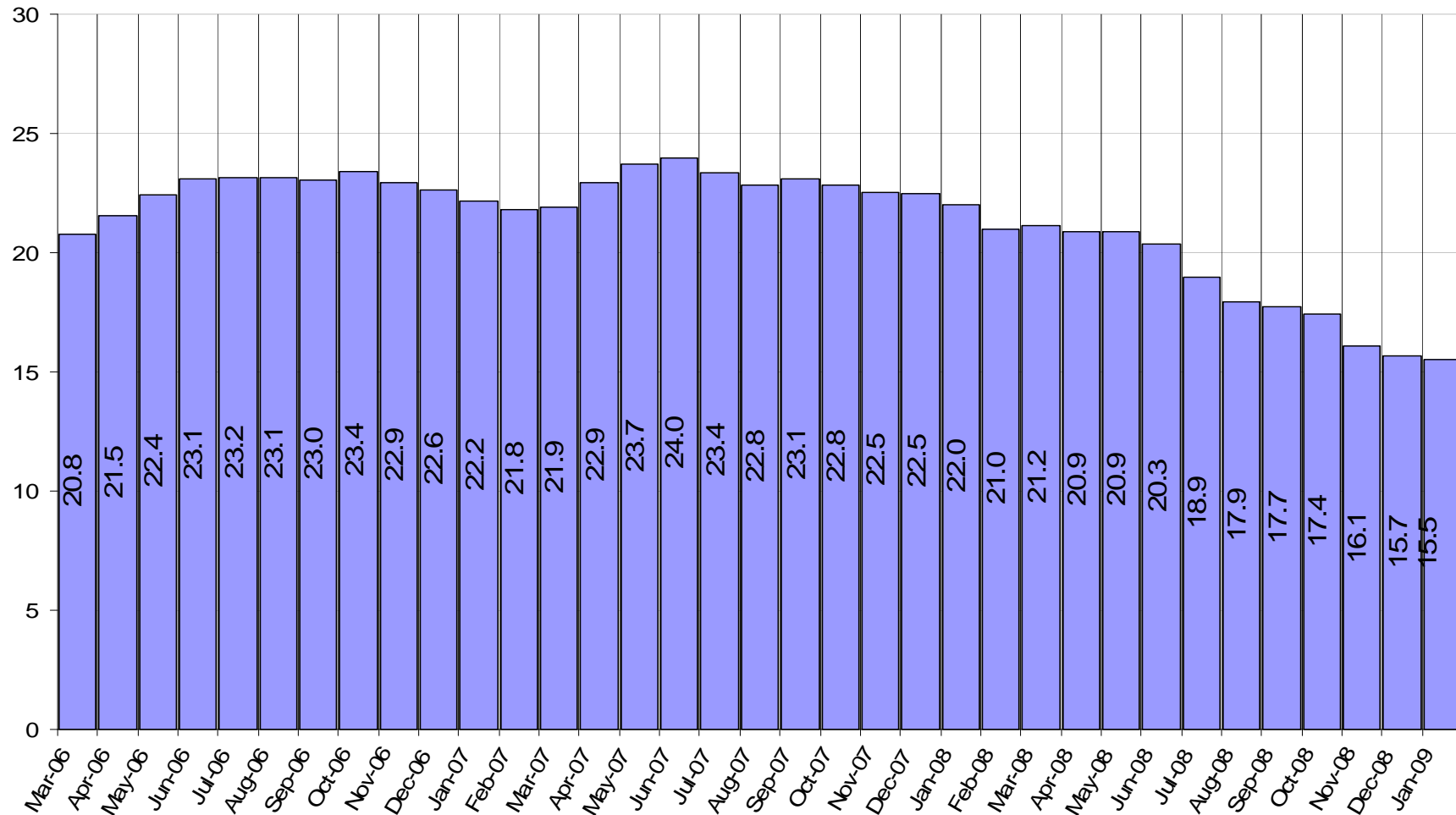


Are they all going into Work?

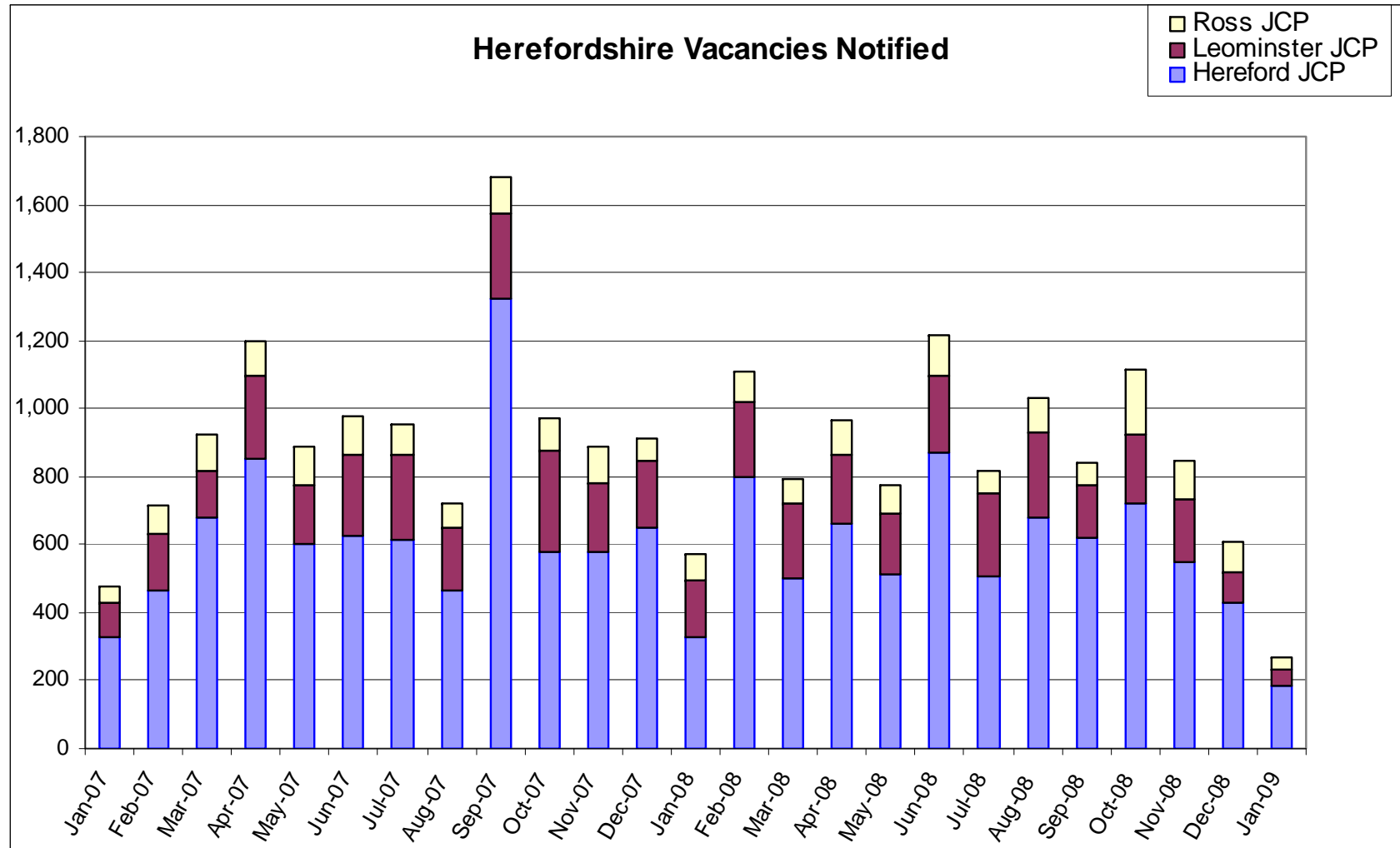


There are some good indicators, though

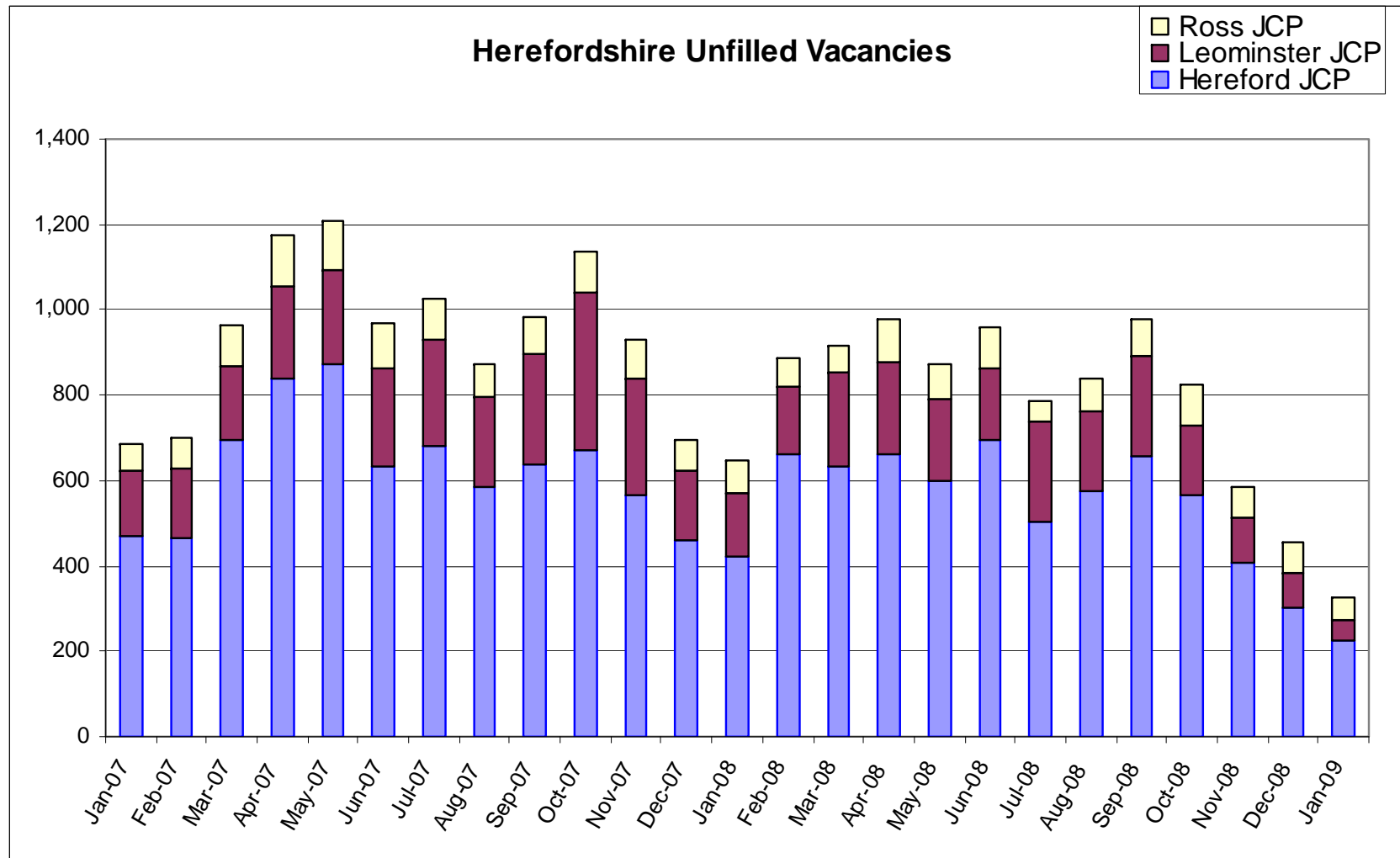
Average Duration of JSA claim - Weeks



New Vacancies (Notified to JCP)



Vacancies (Unfilled)



Redundancies – By Sector

Industry Sector	Employers	Redundancies
Construction	10	77
Distribution & Warehousing	1	5
Engineering	4	168
Leisure / Travel	1	10
Manufacturing	14	271
Media	0	0
Retail	9	124
Food	3	68
Other	4	30
Accommodation	1	2
Total	47	755

Redundancies Timeline

Week Ending	Employers	Redundancies
November 2008	11	308
December 2008	4	45
January 2009	9	141
February 2009	5	106
March 2009	2	50
Not Notified as yet	16	105
Grand Total	47	755

Redundancies - Areas affected

	Employers	Redundancies
Bromyard	1	1
Hereford	34	593
Ledbury	1	5
Leominster	8	106
Ludlow	2	35
Ross-on-Wye	1	15
Grand Total	47	755

How does JCP deal with Redundancy notifications?

- We contact all employers who notify us of redundancies
- The package we encourage them to take up is:-
 - Redundancy Talks to staff
 - Benefits
 - How to look for work
 - Training and Skills

How does JCP deal with Redundancy notifications? (Contd.)

- We send out Vacancy Lists for the employers to put up in their staff areas so people can start applying as soon as possible
- We provide leaflets and help set up Resource Centres using company internet access
- We introduce other partner agencies who may be able to help (Unite, Family Information Services, colleges etc.)
- We have a contact point in the local JCP office to support the employer

Any Questions?

Contact me on

- Philip.vallely@jobcentreplus.gsi.gov.uk
- 01562 623683
- 07920 784519