

# Brockhampton with Much Fawley Parish Plan 2011



**Brockhampton with Much Fawley Parish  
Council - Parish Plan Group  
Anna Straker - Clerk to the Council  
01432 860061  
annastraker@yahoo.com  
www.brockhampton.com  
Or -  
Any member of the Parish Council  
This version: BMF PP Action Plan-v2-110625**

This is a community lead exercise facilitated by the Parish Council to encourage local residents and those that visit the area to engage in the direction and future management of this outstanding area of scenic beauty and rural tranquillity. This is a continuous process and this document will be updated periodically to reflect the needs and requirements of the residents and visitors. Please check that this is the most recent version of the document by using the contacts listed to the left.



## **A Plan for the future of Brockhampton with Much Fawley**

This document will be reviewed on a regular basis and sets out our priorities for the future as identified through the various consultation activities over the past couple of years and future activities.

The issues which have been identified as priorities include:

- The Village Hall
- Affordable Housing for Local People
- Environmental Issues
- Transport and Travel
- Community Links and Activities

The Plan was launched at an event held at **Brockhampton Village Hall on Saturday 2<sup>nd</sup> April 2011 from 5 to 7pm**. All residents of the Parish and those who work or seek recreation in the area were invited to come along and join in the fun and discussion.

The agreed 'Action Plan' will help us all to influence the future development of the Parish. The success of the plan depends on you and other residents in the area. In line with the current Government's 'Big Society', you are invited to volunteer your help in realising some of the aspirations. This need not be a big commitment and your help, however small, will be most welcome.

### **The Action Plan**

The main body of the Action Plan was drawn up with the help of Herefordshire Council in 2010 based on the questionnaire, which was circulated to all households in the Parish and businesses in the Parish. Since that report was prepared various actions have already been undertaken as a direct result of the questionnaire.

Following feedback from residents regarding traffic calming in Brockhampton, 3 new signs have been erected which read 'Welcome to Brockhampton please drive carefully'.

There have been lengthy negotiations between AMEY and the Parish Council to improve the condition of roads in the parish. Amey is now undertaking repair works from the beginning of March along the length of C1272 -Ladyridge/Brinkley Hill road towards Hoarwithy, and U70014 - The Falcon/ Brockhampton Court. Requests have also been made for additional grit bins to be located on Brinkley Hill and LadyRidge.

With the kind agreement of Mr Jeremy Clay of Fawley Court, fishing has been made available to Parish residents and those participating have helped effect bank improvements along the stretches of River Wye where this has been agreed.

The Parish Council has allocated funds to help with improvements to The Parish Hall and discussions are underway with a view to identifying and realising some of the aspirations expressed more recently at a Planning for Real event including the provision of affordable housing for local people, play facilities for children, a social club and sports facilities.

(Photographs courtesy of Ian Brough and Richard Garnett)

# Brockhampton with Much Fawley Parish Plan

## Action Plan

This action plan has been drawn up in response to all the survey responses and research carried out within the Parish, indicating what parishioners are saying about their hopes and wishes for those living in, working in and visiting the parish. This is a first draft and, once adopted, will be reviewed regularly and updated to meet changing needs and aspirations.

Each issue of concern or interest has a number of objectives that the parish will be striving to achieve.

Each objective will result in a number of tasks, which will be agreed as the Action Plan progresses.

With each objective and series of tasks the following will have to be defined:

- Helpful pointers to who should carry out the tasks or who could be contacted for help
- An indication of the costs involved or what resources may be required
- Target and success indicators that will allow effective monitoring
- Notes giving additional information.

Objectives	Tasks	Costs & Resources	Success Indicators	Remarks & Action Leader
<b>Children &amp; Young People</b>				Dr. C A
Improve play facilities at Brockhampton Parish Hall.	Contact young people in Parish and neighbouring parishes about demand.		Survey Completed by September 12 <sup>th</sup> 2011	
Work with Brockhampton Cricket Club to provide sports facilities for young people.	Grants of £1,000 and £250 have been made to Brockhampton Cricket Club for improved facilities for young people.	£1250:00	Installation of safety flooring in Kitchen and contribution to new training facilities	Completed for April 2011
<b>Housing and Other Developments</b>				R G
Draw up a clear plan for housing in the parish, particularly for young people and small families and low cost housing for outright sale.	Discussions with local landowners are underway. Neighbouring parishes to be contacted about joint approaches.		Secured interest from one local landowner. And one disinterested Action pending landowner decision on timing	
<b>Business Activities</b>				T G
Work to support the development of small-scale enterprises/ craft workshops and other small business developments.	Support for Ladyridge Development		Completion of development June 2010 and part occupied	Co-operation with the owner and support for further

				lets
<b>Leisure and Tourism</b>				K M
Draw up a register of tourist and leisure facilities and events. Estimate potential for these and how these can be encouraged and developed.	Llanwarne Agricultural Society Ploughing Event held at Parish Hall. Llama Trekking; Brockhampton website;  Brockhampton Church, Cricket Club; Caplor Camp; AONB & Wye Valley Walk. Improvement of Parish Hall & Tennis Court for landscaping. Publicise local events and undertake an asset register. Fishing on River Wye. Provision of local walk maps at car parks. Organise further fishing event in August 2011 and Bat walk in Autumn 2011	£500 for Parish Hall grounds  £60.00 (est.) for 2 water proof leaflet dispensers.	Successful delivery of the ploughing match Sept 2010. Completed register by 1 <sup>st</sup> August 2011. Estate engaged (Mr J Clay) and establishment of fishing access for local residents. Improvement of Tennis court to match readiness.	
<b>Public Services and Crime Prevention</b>				C G
Look into the setting up of a Neighbourhood Watch Scheme.	Undertake discussion with Crime Prevention Officer		Engage with Police and Community Support officer to attend PC meetings September 2011 onwards	
Liaise with police about improved presence in the Parish.	Undertake discussion with Crime Prevention Officer		As above	
<b>Roads, Footpaths and Transport</b>				N P
Draw up plans for dealing with speeding traffic and improvements to roads and footpaths.	Village name signs at the key entry points to the area.  Measures in collaboration with Landowner and	£1400.00 (est.)	Village signs installed at entrance points (4) by March 2011. Majority of road surface repairs	

	agent to stop use of un adopted cut-through. Regular communication with Amey on road maintenance, pot-hole and surface repairs to roads in the parish.		completed with new problems notified to Amey. Action implemented to restrict the use of Caplor/Old School lane to estate traffic only	
<b>Environment</b>				<b>C G</b>
Draw up plans for maintenance and development of the environment in line with Parish Report.	Bat walks and quiz walk to increase awareness of wildlife in local area.		One event completed and further event planned for Autumn 2011	

## BROCKHAMPTON PARISH (ROSS)

### POPULATION CENSUS 2001

<u>Age</u>	<u>No.</u>	<u>% of total in Parish</u>	<u>County breakdown</u>
0-4	12	5.0%	5.4%
5-7	6	2.5%	3.6%
8-9	3	1.2%	2.6%
10-14	16	6.6%	6.6%
15	5	2.1%	1.3%
16-17	3	1.2%	2.4%
18-19	6	2.5%	2.0%
20-24	11	4.5%	4.0%
25-29	8	3.3%	5.2%
30-44	34	14.0%	21.0%
45-59	57	23.6%	21.1%
60-64	14	5.8%	5.7%
65-74	25	10.3%	10.1%
75-84	23	9.5%	6.9%
85-89	9	3.7%	1.5%
90+	10	4.1%	0.8%
<b>Total</b>	<b>242</b>	<b>100.0%</b>	<b>100.0%</b>

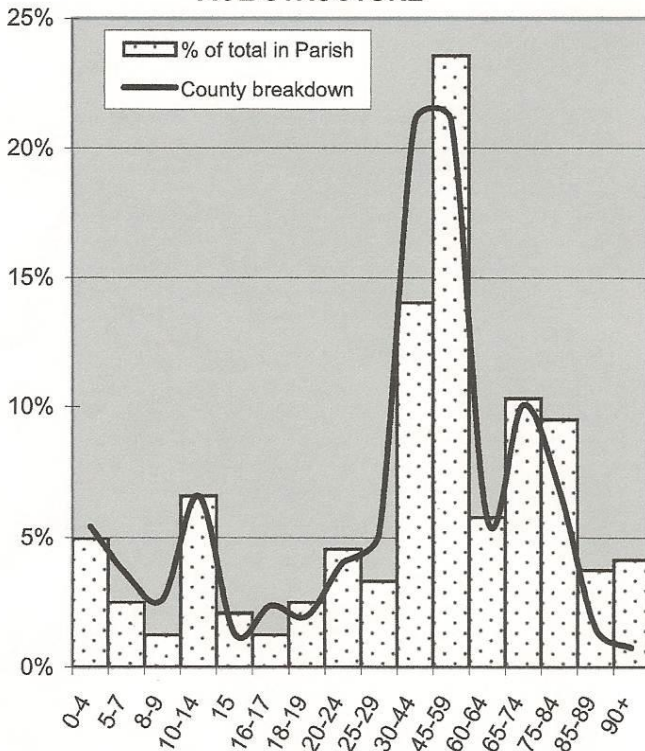
### POPULATION DENSITY

<i>Persons per hectare</i>		
	<u>Parish</u>	<u>County</u>
Area (ha)	690	217,973
Population 2001	242	174,871
Density	0.35	0.80

### PARISH WITHIN WARD

OLD GORE WARD

### AGE STRUCTURE



Please note that the age groups shown are **not** of equal size. This chart is designed to illustrate differences between the age distribution of the area and that of the county as a whole.

**CENSUS 2001 DATA - KEY STATISTICS**

<b>POPULATION CENSUS 2001</b>			
<u>Age</u>	<u>No.</u>	<u>% in Parish</u>	<u>County %</u>
0-15	42	17.4%	19.5%
16-59	119	49.2%	55.6%
60+	81	33.5%	24.9%
<b>TOTAL</b>	<b>242</b>	<b>100.0%</b>	<b>100.0%</b>

	<u>Parish</u>	<u>County</u>
<b>No. of students living away from home:</b>	7	2,607
<b>No. of residents in communal establishments:</b>	33	1,998

<b>ETHNIC GROUPS</b>			
	<u>% in Parish</u>	<u>County %</u>	
White	97.5%	99.1%	
Mixed	2.5%	0.4%	
Asian or Asian British	0.0%	0.2%	
Black or Black British	0.0%	0.1%	
Other	0.0%	0.2%	

<b>HOUSEHOLD COMPOSITION</b>			
<u>% of households comprising:</u>	<u>Parish</u>	<u>County</u>	
Lone pensioner	12.0%	15.4%	
Other single person	8.4%	13.3%	
One family - All pensioners	13.3%	11.6%	
<b>Married couple:</b>			
- without children	21.7%	15.2%	
- with dependent children	15.7%	17.7%	
- all children non-dependent	10.8%	5.8%	
<b>Co-habiting couple:</b>			
- without children	3.6%	4.3%	
- with dependent children	3.6%	3.2%	
- all children non-dependent	0.0%	0.3%	
<b>Lone parent:</b>			
- with dependent children	3.6%	5.37%	
- all children non-dependent	0.0%	2.82%	
<b>Other households:</b>			
- with dependent children	3.6%	1.6%	
- all students	0.0%	0.1%	
- all pensioners	0.0%	0.6%	
- other	3.6%	2.8%	
<b>TOTAL No. of households:</b>	<b>83</b>	<b>74,282</b>	

<b>MARITAL STATUS</b>			
<u>% of people aged 16 and over:</u>	<u>Parish</u>	<u>County</u>	
Single (never married)	23.0%	24.5%	
Married	41.0%	46.9%	
Re-married	15.0%	8.9%	
Separated (but still married)	1.5%	1.9%	
Divorced	4.0%	8.8%	
Widowed	15.5%	9.0%	

<b>HEALTH</b>			
Limiting long term illness = long-term illness, health problem or disability which limits daily activities or work			
	<u>Parish</u>	<u>County</u>	
<b>% of people with limiting long term illness:</b>	25.3%	17.9%	
<b>% of working age people with limiting long term illness (working age = 16-64M/16-59F):</b>			
	9.8%	12.9%	
<b>In the 12 months before Census day, % of people whose health was:</b>			
	<u>Parish</u>	<u>County</u>	
Good	65.1%	68.7%	
Fairly Good	24.9%	23.0%	
Not Good	10.0%	8.3%	

<b>PROVISION OF UNPAID CARE</b>			
	<u>Parish</u>	<u>County</u>	
<b>All people providing unpaid care:</b>	14	17,577	
<b>% of people who provide unpaid care for:</b>			
1-19 hours/week	57.1%	71.2%	
20-49 hours/week	21.4%	9.9%	
50+ hours/week	21.4%	18.9%	

<b>TENURE</b>			
<u>% of households:</u>		<u>Parish</u>	<u>County</u>
<b>Owner occupied:</b>			
Owns outright		22.0%	35.8%
Owns with mortgage or loan		17.1%	34.9%
Shared ownership		0.0%	0.9%
<b>Rented from:</b>			
Social rented		8.5%	15.2%
Private landlord or agency		34.1%	9.1%
Other (inc. 'tied' homes)		18.3%	4.1%

<b>CARS &amp; VANS</b>			
<u>% of households with various numbers of cars or vans:</u>		<u>Parish</u>	<u>County</u>
None		7.3%	18.2%
One		36.6%	44.8%
Two		39.0%	28.5%
Three		12.2%	6.4%
Four or more		4.9%	2.2%

<b>ECONOMIC ACTIVITY</b>		
	<u>Parish</u>	<u>County</u>
<b>All people aged 16-74 years:</b>	156	124,824
<b>% of people aged 16-74 years:</b>		
<b>Economically active:</b>		
Employees Part-time (= <30 hrs)	17.3%	13.6%
Employees Full-time (= >31 hrs)	25.0%	36.1%
Self - employed	20.5%	13.7%
Unemployed	1.9%	2.7%
Full-time student	2.6%	1.9%
<b>Economically inactive:</b>		
Retired	15.4%	16.1%
Student	5.8%	2.9%
Looking after home/family	8.3%	6.2%
Permanently sick/disabled	3.2%	4.3%
Other	0.0%	2.5%
<b>INDUSTRY OF EMPLOYMENT</b>		
	<u>Parish</u>	<u>County</u>
<b>No. of people in employment</b>	103	81,289
<b>% of people aged 16-74 in employment working in:</b>		
Agriculture; hunting; forestry	17.5%	6.7%
Fishing	0.0%	0.0%
Mining & quarrying	0.0%	0.2%
Manufacturing	8.7%	17.4%
Electricity; gas & water supply	0.0%	0.5%
Construction	5.8%	7.7%
Wholesale & retail trade; repair of motor vehicles	10.7%	18.4%
Hotels and catering	7.8%	4.8%
Transport storage & communication	2.9%	4.7%
Financial intermediation	2.9%	1.9%
Real estate; renting & business activities	13.6%	9.5%
Public administration & defence	8.7%	5.0%
Education	4.9%	7.4%
Health and social work	10.7%	11.6%
Other	5.8%	4.3%
<b>TRAVEL TO WORK</b>		
	<u>Parish</u>	<u>County</u>
<b>% of people who work mainly at or from home:</b>	25.5%	15.2%
<b>% of people aged 16 - 74 in employment who usually travel to work by:</b>		
Public Transport	0.0%	3.5%
Motorcycle, scooter or moped	2.9%	1.0%
Driving a car or van	55.9%	57.8%
Passenger in a car or van	2.9%	5.7%
Taxi	0.0%	0.3%
Bicycle	0.0%	4.2%
On foot	9.8%	11.7%
Other	2.9%	0.5%
<b>% of public transport users in households:</b>		
With a car or van:	-	76.9%
Without a car or Van:	-	23.1%

<b>National Statistics - Socio-economic Classification (NS-Sec) replaces 'social class of households'</b>		
<b>% of all people aged 16-74 years</b>		
	<u>Parish</u>	<u>County</u>
Large employers & higher managerial occ's	1.9%	3.0%
Higher professional occ's	4.5%	4.1%
Lower managerial & professional occ's	15.3%	17.7%
Intermediate occ's	3.8%	7.1%
Small employers & own account workers	17.8%	12.1%
Lower supervisory & technical occ's	8.3%	7.6%
Semi-routine occ's	11.5%	13.3%
Routine occ's	7.6%	9.0%
Never worked	0.0%	1.6%
Long-term unemployed (since 1999 or earlier)	0.0%	0.8%
Full-time students	7.6%	4.7%
Not classifiable	21.7%	19.1%
<i>occ's=occupations</i>		
<b>QUALIFICATIONS</b>		
<b>% of all people aged 16-74 years</b>		
	<u>Parish</u>	<u>County</u>
<b>No qualifications</b>	32.9%	28.5%
<b>Level 1:</b> 1+ 'O'Level passes; 1+ CSE/GCSE (any grades) NVQ level 1/Foundation GNVQ.	14.6%	16.7%
<b>Level 2:</b> 5+ 'O'Level passes/grade 1 CSEs 5+ GCSEs (grades A-C); School Certificate;1+'A'/AS' Level NVQ Level 2; Intermediate GNVQ	20.9%	21.0%
<b>Level 3:</b> 2+ 'A' levels; 4+ AS levels; Higher School Certificate; NVQ level 3; Advanced GNVQ.	8.9%	7.3%
<b>Level 4/5:</b> First or Higher degree NVQ levels 4 and 5; HNC; HND Qualified Teacher or Medical Doctor Qualified Dentist or Nurse; Midwife; Health Visitor.	20.3%	19.3%
<b>Other qualifications or level unknown</b>	2.5%	7.2%

For further information, contact the Research Team  
E-mail: [researchteam@herefordshire.gov.uk](mailto:researchteam@herefordshire.gov.uk)  
Tel: 01432 260498